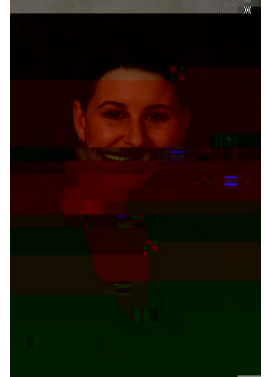


W/ D/K>K'z ^ D/E Z I & >> ìíó

7+('(3\$570(17 2) (3,'(0,2/2*< %,267\$7,67,&6 \$1' 2&&83\$7,210/16(55/7-5,(6 ,6 \$-333)529('
5283 /(\$51,1 \$&7,9,7< 6(&7,21 \$6 '(),1(' %< 7+(*
2) 3+<6,&,\$16 \$1' 685*(216 2) &\$1\$\$

63(&,\$/ 6(0,1\$5



SURPHQDGH 6LU :LOOLD TOY' WKH KHDOWK DQG ZHOO

2% - (&7,9(6

'HVFULEH LPSDFWV RI LPSDFWV RI VRFLDO SROLF
WUDQVIHUV €P f cEHLV WUDQVIHUV DGRORHVFHWHU WZV

±,QQRFHQWL LQ)ORUHQFH
VKH FRQGXFVU UHVHDFK
LPSDFWV RI VRFLDO SROLF
WUDQVIHUV DGRORHVFHWHU WZV
DQG UHSURGXFWLYH KHDO
UDQJH RI H[SHULPHQWDO D
H[SHULPHQWDO GHVLJQV
3K ' LQ 3XEOLF 3ROLF\ IUF
YHUVLW\ RI 1RUWK &DUROL

-EHLQJ RI

DGROHVFHQWV OLYLQJ LQ WDUJHWHG KR XVH
KROGV 8VLQJ HYLGHQFH JHQHUDWHG LQ
WKH 7UDQVIHU 3URMHFW D FROODERUDWLRQ
DLPHG DW LPSURYLQJ WKH HYLGHQFH
EDVH DURXQG JRYHUQPHQWYFDKQFH EDVH
WUDQVIHUV LQ \$IULFD DQG JDFLOLWDWLQJ
XSWDNH E\ SROLF\PDNHUV, WKLV SUHVHQ
WDWLRQ UHYLHZV ILQGLQJ 3ROLF\HDFHWHU FKHHUHQGUVLW\ RI 1HZ <RUN
ZHGLQJ DQG SDWKZD\VRFLDO SROLF\ 6SHFLDOZRWNGHWHU FRQVXOWHG
81,&() 2IILFH RI 5HVHDFKQWHUQDWLRQDO 1*2V

81,&() 2IILFH RI 5HVHDFKQWHUQDWLRQDO 1*2V

ZZZ PFJLOO ELDR HSDFK QHXWQWV VHPLQDUV HSLGHPLRO