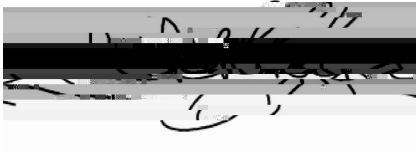
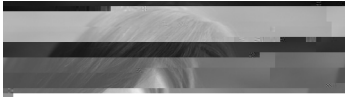


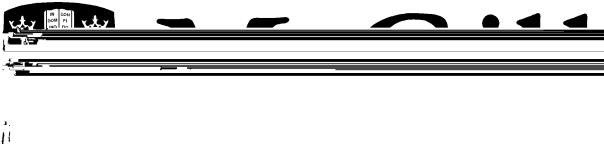
PRINCIPAL'S  
MESSAGE  
2007/2008



**Welcome to McGill!**







# HEALTH SCIENCES CALENDAR 2007 - 2008

McGill University:  
[www.mcgill.ca](http://www.mcgill.ca)

Admission:  
[www.mcgill.ca/applying](http://www.mcgill.ca/applying)

Registration:  
[www.mcgill.ca/minerva](http://www.mcgill.ca/minerva)

Faculty of Dentistry  
[www.mcgill.ca/dentistry](http://www.mcgill.ca/dentistry)

Faculty of Medicine  
[www.medicine.mcgill.ca](http://www.medicine.mcgill.ca)

School of Nursing  
[www.nursing.mcgill.ca](http://www.nursing.mcgill.ca)

Calendar of Dates 2007-08 . . . . .	9
General University Information and Regulations . .	33
Services and Support . . . . .	55
Faculty of Dentistry . . . . .	65
Faculty of Medicine . . . . .	79
School of Nursing . . . . .	115
School of Physical and Occupational Therapy .	127
School of Dietetics and Human Nutrition . . . . .	141







- 
- 6.3.11 Curriculum Review
  - 6.3.12 Evaluation System
  - 6.3.13 Medical Equipment
  - 6.3.14 Requirements for the Degree of M.D.,C.M.
  - 6.3.15 Requirements for Licence
  - 6.3.16 Graduate Training Programs in the Clinical  
Departments of the Faculty of Medicine
  - 6.3.17 Graduate Studies and Research in the Medical  
Sciences
  - 6.4 Curriculum Components and Units, page 99
    - 6.4.1 Basis of Medicine (BOM)
    - 6.4.2 Introduction to Clinical Medicine (ICM)
    - 6.4.3 Core Clerkship
    - 6.4.4 Senior Clerkships
    - 6.4.5 Electives
  - 6.5 Departments and Units in the Faculty of Medicine, page 100
    - 6.5.1 Anatomy and Cell Biology
    - 6.5.2 Anesthesia
    - 6.5.3 Biochemistry
    - 6.5.4 Biomedical Engineering
    - 6.5.5 Dermatology
    - 6.5.6 Diagnostic Radiology
    - 6.5.7 Emergency Medicine
    - 6.5.8 Epidemiology, Biostatistics, and Occupational  
Health
    - 6.5.9 Family Medicine
    - 6.5.10 Geriatric Medicine
    - 6.5.11 Human Genetics
    - 6.5.12 Medical Physics Unit
    - 6.5.13 Medicine
    - 6.5.14 Microbiology and Immunology
    - 6.5.15 Neurology and Neurosurgery
    - 6.5.16 Obstetrics and Gynecology
    - 6.5.17 Oncology
    - 6.5.18 Ophthalmology
    - 6.5.19 Otolaryngology
    - 6.5.20 Pathology
    - 6.5.21 Pediatrics
    - 6.5.22 Pharmacology and Therapeutics
    - 6.5.23 Physiology
    - 6.5.24 Psychiatry
    - 6.5.25 Social Studies of Medicine
    - 6.5.26 Surgery
  - 6.6 Staff by Department, page 105

## **7 School of Nursing, page 115**

- 7.1 The School, page 115
  - 7.1.1 Location
  - 7.1.2 Administrative Officers
  - 7.1.3 Academic Staff
  - 7.1.4 History
  - 7.1.5 Programs Offered
  - 7.1.6 Language Policy
  - 7.1.7 Communication Policy
- 7.2 Bachelor Programs, page 117
  - 7.2.1 Bachelor of Science in Nursing Program –  
B.Sc.(N.)
    - 7.2.1.1 B.Sc.(N.) Entrance Requirements
    - 7.2.1.2 B.Sc.(N.) Course of Study
  - 7.2.2 Bachelor of Nursing  
(Integrated) Program – B.N. (I.)
    - 7.2.2.1 B.N. (I.) Ena

- 
- 8.6.4.1 Joint Courses in Occupational Therapy and Physical Therapy Programs
  - 8.6.4.2 Occupational Therapy Courses
  - 8.6.4.3 Physical Therapy Courses
  - 8.6.5 Professional Specialty Courses – Descriptions (Continuing Students)

**9 School of Dietetics and Human Nutrition, page 141**

- 9.1 The School, page 141
  - 9.1.1 Location
  - 9.1.2 Administrative Officers
  - 9.1.3 Academic Staff
  - 9.1.4 General Information
- 9.2 Programs and Admission Information, page 142
  - 9.2.1 Degrees Offered
  - 9.2.2 Application
  - 9.2.3 Admission Requirements
- 9.3 Academic Information and Regulations, page 143
  - 9.3.1 Academic Credit Transfer
  - 9.3.2 Standing
  - 9.3.3 Degree Requirements
- 9.4 Academic Programs, page 144
  - 9.4.1 Freshman Major
  - 9.4.2 Major in Dietetics
  - 9.4.3 Major in Nutrition
  - 9.4.4 Minor in Human Nutrition
- 9.5 Courses, page 146
  - 9.5.1 Nutrition and Dietetics
  - 9.5.2 Courses Offered by Other Units



# 1 Calendar of Dates 2007-08

The complete Calendar of Dates is available on the Web at [www.mcgill.ca/student-records](http://www.mcgill.ca/student-records). The excerpt published herein was accurate as of February 2007. The information is subject to change and users are advised to verify important dates by checking the Web. Key dates for the faculties and schools included in this Calendar are given below. Unless otherwise specified, dates given for faculties apply to any schools therein.

- Agricultural and Environmental Sciences, including School of Dietetics and Human Nutrition and McGill School of Environment students registered in A&ES
- Arts, including School of Social Work, and McGill School of Environment students registered in Arts
- Education
- Engineering, including School of Architecture
- Desautels Faculty of Management
- Schulich School of Music
- Religious Studies
- Science, including School of Computer Science and McGill School of Environment students registered in Science

FACULTY / SCHOOL LEGENDS			
<b>A&amp;ES</b>	<b>Agricultural and Environmental Sciences</b>	<b>MUS</b>	<b>Schulich School of Music</b>
<b>ARCH</b>	<b>Architecture</b>	<b>NURS</b>	<b>Nursing</b>
<b>ART</b>	<b>Arts</b>	<b>P&amp;OT</b>	<b>Physical and Occupational Therapy</b>
<b>BSW</b>	<b>Bachelor of Social Work</b>	<b>PHD</b>	<b>Doctor of Philosophy</b>
<b>CE</b>	<b>Continuing Education</b>	<b>POSTDOC</b>	<b>Postdoctoral Scholars</b>
<b>DENT</b>	<b>Dentistry</b>	<b>REL</b>	<b>Religious Studies</b>
<b>D &amp; HN</b>	<b>Dietetics and Human Nutrition</b>	<b>SCI</b>	<b>Science</b>
<b>EDUC</b>	<b>Education</b>	<b>SPBSW</b>	<b>Special Bachelor of Social Work</b>
<b>ENG</b>	<b>Engineering</b>	<b>ALL</b>	<b>All students</b>
<b>FMT</b>	<b>Farm Management Technology</b>	<b>NEW</b>	<b>New students</b>
<b>GRAD</b>	<b>Graduate Studies</b>	<b>RET</b>	<b>Returning students</b>
<b>LAW</b>	<b>Law</b>	<b>SPECIAL</b>	<b>Special Students (Summer Term only)</b>
<b>MED</b>	<b>Medicine</b>	<b>VISITING</b>	<b>Visiting Students (Summer Term only)</b>
<b>MGMT</b>	<b>Management</b>	→	<b>Read Activity column for details</b>
<b>MSW</b>	<b>Master in Social Work</b>		

## ACTIVITY CODE LEGENDS

<b>ADV</b>	<b>Academic Advising</b>	<b>LEC</b>	<b>Lecture</b>
<b>APP</b>	<b>Application</b>	<b>MTG</b>	<b>Meeting</b>
<b>APPGRAD</b>	<b>Apply to graduate on Minerva</b>	<b>NOTE</b>	<b>Note to students</b>
<b>AUD</b>	<b>Audition</b>	<b>ORIENT</b>	<b>Orientation</b>
<b>AWRD</b>	<b>Awards (including scholarships)</b>	<b>PLEXAM</b>	<b>Placement exam—application and examination</b>
<b>CONV</b>	<b>Convocation</b>	<b>PREXAM</b>	<b>Practical exam—application and examination</b>
<b>DEF</b>	<b>Deferred—application and examination</b>	<b>REG</b>	<b>Registration</b>
<b>EXAMS</b>	<b>Examinations</b>	<b>STAGE</b>	<b>Field practice, etc.</b>

## CALENDAR OF DATES

DATE	ACTIVITY CODE	FACULTY/SCHOOL	ACTIVITY
<b>March 2007</b>			
Mar. 1, Thurs.	APP	LAW	Deadline for applications for admission to Law for students applying from a Quebec CEGEP, from French Baccalaureate Programmes and for Law Visiting Applicants.
Mar. 1, Thurs.	SUPP		Application deadline for supplemental examinations in Fall term courses and N1/N2 courses from the Fall term 2006 for Arts, Education, Nursing, Religious Studies, Science and Social Work (not available for Agricultural and Environmental Sciences, Engineering [except freshman UO courses] or Management courses).
Mar. 1, Thurs.	APP	GRAD	Deadline for application for September admission to most departments in the GPSO. (Many departments have earlier deadlines. Please verify with the individual department or on the Web at <a href="http://www.mcgill.ca/applying/graduate">www.mcgill.ca/applying/graduate</a> ).
Mar. 1, Thurs.	APP	MED	Deadline for application to Medical Prep. Program for Quebec residents.
Mar. 1, Thurs.	APP	DENT	Deadline for application to Dentistry for all CEGEP applicants (Dental Prep.).
Mar. 1, Thurs.	APP	ALL	Deadline for applications for all applicants studying, or who last studied, in a CEGEP in Quebec (except applicants to Music).
Mar. 1, Thurs.	EXCH	GRAD	Deadline for incoming exchange applications at the graduate level Fall term (September) start and Winter term (January) start. (Many departments have earlier deadlines. Please verify with individual department or at <a href="http://www.mcgill.ca/applying/graduate">www.mcgill.ca/applying/graduate</a> ).
Mar. 1, Thurs.	APP	REL	Deadline for application for Summer admission to Faculty of Religious Studies B.Th. program.
Mar. 2, Fri.	LEC	P&OT	Last day of lectures for 1 <sup>st</sup> year Physical and Occupational Therapy students.
Mar. 5, Mon. to Mar. 16, Fri.	EXAM	P&OT	Examination period for 1 <sup>st</sup> year Physical and Occupational Therapy students.
Mar. 7, Wed.	APPGRAD		Deadline to apply to graduate on Minerva for all Undergraduate students and Graduate students in all non-thesis programs (certificates, diplomas, master's non-thesis) who expect to complete their program requirements at the end of the Winter 2007 term (Spring 2007 convocation).
Mar. 8, Thurs.	<b>REG</b>		Summer Term registration opens for Undergraduate students entering U3/U4 year; Continuing Education returning students; and Graduate students. Undergraduate students should refer to the summer course calendar for all Management course priority registration dates. Graduate students should confirm dates with individual departments.
Mar. 8, Thurs.	<b>REG</b>	LAW	Summer Term registration opens for Law Undergraduate students.
Mar. 12, Mon.	ADV	A&ES/FMT	Academic advising begins for all returning undergraduate students in the Faculty of Agricultural & Environmental Sciences & FMT students.
Mar. 12, Mon.	ADV	ART/SCI/BSW	Departmental academic advising begins for returning students in Arts, Science and Social Work.
Mar. 12, Mon. & Mar. 13, Tues.	ADV	ENG	Distribution of all registration information and calendars for returning Engineering students in the Student Affairs Office, Engineering Student Centre, Frank Dawson Adams Building, Suite 22.
Mar. 12, Mon. to Mar. 14, Wed.	ADV	MUS	Distribution of registration information and calendars for returning Music students in the lobby of the Strathcona Music Building.
Mar. 12, Mon. to Mar. 16, Fri.	ADV	ART/SCI/BSW	Distribution of calendars for returning Arts and Science students in the McGill Bookstore, 3420 McTavish St.
Mar. 12, Mon. to Mar. 16, Fri.	ADV	MGMT	Distribution of all registration information and calendars for returning Management students.
Mar. 12, Mon. to Mar. 16, Fri.	ADV	REL	Distribution of calendars for returning BTh students, BIRKS Building, Room 109.
Mar. 12, Mon. to Mar. 22, Thurs.	ADV	EDUC	Academic advising for returning students in Education. Appointments to be arranged by individual departments. Please consult the Student Affairs Website at <a href="http://www.mcgill.ca/edu-sao">www.mcgill.ca/edu-sao</a> for details.
Mar. 13, Tues.	<b>REG</b>		Summer Term registration opens for all Undergraduate students and Continuing Education newly-admitted and special students. Undergraduate students should refer to the summer course calendar for all Management course priority registration on o Mac 0 TDe

Mar. 16, Fri.	EXAM	A&ES	Deadline to report all exam conflicts to the Student Affairs Office (Laird Hall, Room 106) for Winter term exams.
Mar. 19, Mon. to Apr. 27, Fri.	STAGE	P&OT	Clinical Affiliation for 1 <sup>st</sup> year Physical and Occupational Therapy students.
Mar. 21, Wed.	APPGRAD		Deadline for all Undergraduate students and Graduate students in all non-thesis programs (certificates, diplomas, master's non-thesis) who expect to complete their program requirements at the end of the Summer 2007 term (Fall 2007 convocation) to apply to graduate on Minerva.
Mar. 22, Thurs.	<b>REG</b>		

## CALENDAR OF DATES

---

Apr. 11, Wed.	LEC		Last day of lectures for Winter term for classes in Agricultural and Environmental Sciences (excluding FMT), Arts, Continuing Education, Education (non-blocked courses), Engineering including Architecture, Graduate Studies, Law, Management, Music, Nursing, Physical and Occupational Therapy (second and third year), Religious Studies, Social Work (BSW & MSW), Science.
	NOTE		The normal Wednesday schedule of course activities is cancelled for April 11. In its place, all lectures, labs, conferences and other course-related activities that were cancelled on Monday, April 9 because of Easter Monday will be held on Wednesday, April 11th.
Apr. 13, Fri. Apr. 13, Fri. to Apr. 30, Mon.	STAGE	BSW/MSW	Last day of Field Practice for B.S.W. (U2 & U3) students & for M.S.W. students.
Apr. 13, Fri.			

May 1, Tues. & May 2, Wed.	EXAMS		Deferred and supplemental examinations in courses ending in the Fall term in Arts, Education, Nursing, Physical and Occupational Therapy, Religious Studies, Science, Social Work and Engineering (U0 courses only).
May 2, Wed. & May 3, Thurs.	DEF	A&ES	Deferred examinations for courses ending in the Fall term in Agricultural and Environmental Sciences.
May 2, Wed. to May 6, Sun.	REG	CE	Summer Term late registration for all Continuing Education Students.
May 3, Thurs.	REG	LAW	Registration (credits restricted) for Fall 2007 and Winter 2008 begins for returning U3 students in Faculty of Law.
May 4, Fri.	STAGE	D & HN	Orientation for NUTR 311, Stage in Dietetics 2B; site placements begin May 7, Monday.
May 8, Tues.	REG	LAW	Registration (credits restricted) for Fall 2007 and Winter 2008 begins for returning U2 students in Faculty of Law.
May 10, Thurs.	REG	LAW	Registration (with credit limit raised) for Fall 2007 and Winter 2008 begins for all returning students in Faculty of Law.
May 15, Tues.	DEF		Application deadline for deferred examinations for Winter term and multi-term courses ending in the Winter term 2007 in Agricultural and Environmental Sciences, Arts (including School of Social Work), Education, Engineering and Science.
May 15, Tues.	W		Deadline for web withdrawing (grade of "W") from multi-term courses (D1/D2, N1/N2) that started in Winter 2007 and end in the Summer term or in the Fall term (with fee refund for Summer term) for students in Agricultural and Environmental Sciences, Arts, Continuing Education, Education, Engineering including Architecture, Graduate Studies, Law, Management, Music, Physical and Occupational Therapy, Religious Studies, Social Work, and Science (no withdrawals from Education Intensive courses).
	NOTE		Students in multi-term courses with course numbers ending in N1 and N2 only (started in the winter, skip the summer, are completed in the subsequent Fall term) may withdraw on Minerva until May 15 and following May 15 until the end of the Fall term course change period on September 18 (with full refund for the Fall term) by contacting their faculty Student Affairs Office
May 15, Tues.	W--	GRAD	Deadline for newly-admitted students beginning their graduate thesis program in a Summer Term of Residence to withdraw from the University, with fee refund (less deposit or \$100 minimum charge).
May 18, Fri.	LEC	P & OT	End of Winter term 2007 for Physical and Occupational Therapy students – Integration Block.
May 21, Mon.	HOLIDAY		

CALENDAR OF DATES

---

June 1, Fri. to Sept. 4, Tues.	ADV	ART/SCI	On-line academic advising for students newly-admitted to the U0 four-year program (97-120 credits). Refer to the Welcome to McGill booklet and the Student Affairs Office Website ( <a href="http://www.mcgill.ca/artscisao">www.mcgill.ca/artscisao</a> ) for details. Departmental academic advising for all other newly-admitted Arts, Science and Arts & Science students. Refer to the Welcome to McGill booklet, the Student Affairs Office Website ( <a href="http://www.mcgill.ca/artscisao">www.mcgill.ca/artscisao</a> ) and departmental Websites for information about advising dates.
June 1, Fri.	IFT		Agricultural and Environmental Sciences, Arts, Education, Engineering, Management, Nursing and Science application deadline for Fall term 2007 inter-faculty transfers. This deadline also applies to Continuing Education students wishing to transfer into Management.
June 1, Fri.	PREXAM	MUS	Application deadline for September Music practical examinations. (Summer graduands only.)
June 1, Fri.	EXAM/ STAGE	NURS	Last day of Clinical Placement (including examinations) for U3 Bachelor of Science (Nursing) students.
June 4, Mon.	THES	GRAD	Deadline to submit Doctoral theses with Nomination of Examiners forms to GPSO (Thesis Office) for students expecting to convocate in Fall 2007. Meeting this deadline does not guarantee a Fall graduation.
June 8, Fri.	LEC/EXAM/ STAGE	NURS	Last day of lectures, Clinical Placement (including examinations) for U2 Bachelor of Science (Nursing) students.
June 12, Tues. to Sept. 4, Tues.	<b>REG</b>		Registration for Fall 2007 and Winter 2008 using Minerva begins for all <u>newly-admitted</u> undergraduate students in the following faculties who have been admitted from Quebec CEGEPs. Agricultural and Environmental Sciences, Arts, Education, Engineering including Architecture, Management, Music, Nursing, Physical and Occupational Therapy, Religious Studies, Science (including Medical Prep. and Dental Prep. students), and Social Work.
June 12, Tues. to Aug. 17, Fri.	IDCARD		Once students from Quebec CEGEPs have registered, they can avoid line-ups and



CALENDAR OF DATES

Aug. 6, Mon. to Aug. 31, Fri.	ADV	A&ES	Academic advising for new students in Agricultural and Environmental Sciences and School of Dietetics and Human Nutrition. Refer to orientation schedule and Website <a href="http://www.mcgill.ca/macdonald/orientation">www.mcgill.ca/macdonald/orientation</a> for specific details.
Aug. 15, Wed.	INFO		Last day for the Summer 2007 term for students to request fee exemptions and to submit legal documents for proof of Canadian citizenship and proof of Quebec residency to the Admissions, Recruitment and Registrar's Office. Students in Medicine or Continuing Education should submit their documents directly to their Faculty Student Affairs office or the Centre for Continuing Education. Documents received after this date will be updated for the following term only.
Aug. 15, Wed.	PLEXAM	NEW	Application deadline for newly-admitted students for McGill Placement Examinations in basic science courses in biology, chemistry, physics and math including MATH 122 and MATH 123 for newly-admitted Management students. See <a href="http://www.mcgill.ca/student-records/exam/placement">www.mcgill.ca/student-records/exam/placement</a> for more details.
Aug. 15, Wed.	REG		Registration using Minerva begins for Fall term Continuing Education courses for all faculties except Dentistry, Law, Management (day programs), Medicine, Nursing and Physical and Occupational Therapy.
Aug. 19, Sun. to Aug. 31, Fri.	LEC	ART/SCI	Field course BIOL 331 begins and runs for 12 consecutive days. Students must contact the instructor well in advance for registration approval and instructions on getting to the field site.
Aug. 20, Mon.	REG	DENT	In-faculty confirmation of registration for 3 <sup>rd</sup> and 4 <sup>th</sup> year Dentistry students.
Aug. 20, Mon.	LEC	DENT	Lectures begin in the Faculty of Dentistry for 3 <sup>rd</sup> and 4 <sup>th</sup> year students.
Aug. 20, Mon. to Aug. 31, Fri.	ADV	ART/SCI	Information sessions on a drop-in basis for all newly-admitted Arts, Science and Arts & Science students. Refer to the Student Affairs Office Website at <a href="http://www.mcgill.ca/artscisao">www.mcgill.ca/artscisao</a> for details.
Aug. 20, Mon. to Aug. 27, Mon.	ADV	EDUC	Academic advising for new students in Education. (Please consult the Student Affairs Website at <a href="http://www.mcgill.ca/edu-sao">www.mcgill.ca/edu-sao</a> for exact schedule).
Aug. 20, Mon. to Aug. 31, Fri.	IDCARD		IDs at the Trotter Building Cafeteria from 9 a.m. to 5 p.m. Including Saturday, August 25 and Sunday, August 26.
Aug. 21, Tues. & Aug. 22, Wed.	DEF	A&ES	Deferred exams in Faculty of Agricultural and Environmental Sciences for Winter term 2007 courses.
Aug. 21, Tues. to Aug. 23, Thurs.	REG	MED/DENT	Must confirm registration by attending mandatory in-faculty confirmation of registration and orientation for 1 <sup>st</sup> year Medicine and Dentistry students (3 days).
Aug. 22, Wed. & Aug. 23, Thurs.	EXAMS		Deferred and supplemental examinations for courses in Winter term 2007 (including multi-term courses ending in Winter term) for Arts, Education, Engineering (UO courses only), Nursing, Physical and Occupational Therapy, Religious Studies, Science, and Social Work.
Aug. 22, Wed. to Aug. 24, Fri.	PLEXAM	NEW	McGill Placement Examinations for newly-admitted students in basic science courses in biology, chemistry, physics and math, including MATH 122 and MATH 123 for newly-admitted Management students. See <a href="http://www.mcgill.ca/student-records/exam/placement">www.mcgill.ca/student-records/exam/placement</a> for more details.
Aug. 22, Wed.	REG	MED	Orientation for Med-P students.
Aug. 27, Mon.	ADV	ENG	Transfer credit session for new students entering Year 0. Frank Dawson Adams Building, Room 5, 11:00 a.m.
Aug. 27, Mon.	LEC	DENT/MED	Lectures begin in the Faculty of Dentistry for 1 <sup>st</sup> year students and in the Faculty of Medicine for 1 <sup>st</sup> year students.
Aug. 27, Mon. to Aug. 31, Fri.	ORIENT	ART/SCI	Arts and Science Departmental Orientation sessions for Arts, Science and Arts & Science newly-admitted students in U1 three-year programs (96 or fewer credits), Special, Visiting, Exchange and Diploma students. Refer to the Student Affairs Office Website ( <a href="http://www.mcgill.ca/artscisao">www.mcgill.ca/artscisao</a> ) and departmental Websites for information about departmental orientation dates.
Aug. 27, Mon.	ADV	ENG	Transfer credit session for new students entering Year 0. Frank Dawson Adams Building, Room 5, 11:00 a.m.
Aug. 27, Mon.	LEC	A&ES	Students registering for PLNT 358 report for field excursion at 9:00 a.m. in R2-046 Raymond Building, Macdonald Campus. Field excursions continue on Aug. 28, 30, and 31.
Aug. 27, Mon.	LEC	DENT/MED	Lectures begin in the Faculties of Dentistry and Medicine for 2 <sup>nd</sup> year students.
Aug. 27, Mon.	LEC	FMT	First day of lectures in Farm Management and Technology Program (all years).
Aug. 27, Mon. to Aug. 29, Wed.	PLEXAM	MUS	Undergraduate Placement Examinations in Music History, Theory, Musicianship and Keyboard Proficiency.
Aug. 27, Mon. to Aug. 31, Fri.	LEC	A&ES	Students registering for WILD 401 report for class at 9:00 a.m. Field session lasts from Monday to Friday inclusive.
Aug. 27, Mon. to Aug. 31, Fri.	IDCARD	A&ES	IDs at Laird Hall during "Discover





CALENDAR OF DATES

DATE	ACTIVITY CODE	FACULTY/SCHOOL	ACTIVITY
Sept. 4, Tues.	REG	CE	Deadline for students to register for Continuing Education courses without a late registration fee.
Sept. 4, Tues.	REG	ALL	Deadline for new students to register without a late registration fee for all faculties and for returning students to register with a \$50 late fee (\$20 for Special students and Graduate part-time students).
Sept. 4, Tues.	LEC		Lectures begin in programs in Agricultural and Environmental Sciences, Arts, all credit courses and non-credit language courses at Continuing Education, Education, Engineering including Architecture, Graduate Studies, Law, Management, Music, Nursing, Physical and Occupational Therapy, Religious Studies, and Science.
	NOTE		The normal Tuesday schedule of course activities is cancelled for October 9. In its place, all lectures, labs, conferences and other course-related activities that were cancelled on Monday, October 8 because of Thanksgiving Day will be held on Tuesday, October 9.
	NOTE	EDUC	Education students should consult the appropriate Faculty of Education Advising material for details regarding Field Experience courses. Please be aware that a number of placements end later than the last day of lectures in the Fall term.
Sept. 4, Tues.	ORIENT	P&OT	Orientation for 1 <sup>st</sup> , 2 <sup>nd</sup> and 3 <sup>rd</sup> year Physical and Occupational Therapy students.
Sept. 4, Tues.	AWRD	GRAD	Start of external and internal graduate fellowship competitions for 2008-2009 funding. Graduate and final-year undergraduate students should enquire in their department and on the fellowships Website at <a href="http://www.mcgill.ca/gps/fellowships">www.mcgill.ca/gps/fellowships</a> regarding information session schedules and application procedures and deadlines.
Sept. 4, Tues. to Sept. 7, Fri.	AUD	MUS	Auditions for students wishing to take Music Ensemble courses.
Sept. 4, Tues. to Sept. 14, Fri.	REG	MUS	Music (practical lessons) Course Change period in Fall term courses. Submit course change form to Performance Department. (No withdrawals from practical lessons after this period.)
Sept. 5, Wed.	LEC	BSW	Lectures begin for B.S.W. students.
Sept. 5, Wed.	STAGE	MSW	M.S.W. Field Practice commences.
Sept. 5, Wed. to Sept. 18, Tues.	REG	ALL	Late registration period with \$100 late registration fee for all faculties; \$40 for Special students and Graduate part-time students (\$25 late registration fee for Continuing Education students).
Sept. 6, Thurs.	ORIENT	GRAD	University Orientation for new graduate students in Thomson House, 3650 McTavish Street, 3:00 p.m.
Sept. 6, Thurs.	ORIENT	POSTDOC	University Orientation for new postdoctoral scholars in Thomson House, 3650 McTavish Street, 5:00 - 6:00 p.m.
Sept. 10, Mon. to Sept. 14, Fri.	PREXAM	MUS	Practical Examinations for Summer graduands in Music.
Sept. 14, Fri.	EXCH		Deadline for incoming undergraduate exchange applications from bilateral partners with a Winter term (January) start. Please note that the Schulich School of Music and the Faculty of Law have earlier deadlines.
Sept. 17, Mon.	LEC	CE	Lectures begin in Special Intensive English, Special Intensive French and General Studies non-credit courses at Continuing Education.
Sept. 18, Tues.	W		Deadline for web withdrawing (grade of "W") from multi-term courses (D1/D2, N1/N2) that started in Summer 2007 ( <b>with fee refund for Fall term</b> ) for students in Agricultural and Environmental Sciences, Arts, Continuing Education, Education, Engineering including Architecture, Graduate Studies, Law, Management, Music, Physical and Occupational Therapy, Religious Studies, Social Work, and Science (no withdrawals from Education Intensive courses).
	NOTE		Please note that students in multi-term courses with course numbers ending in N1 and N2 only (started in the winter, skip the summer, are completed in the subsequent Fall term) may withdraw on Minerva until May 15 and following May 15 until the end of the Fall term course change period on <b>September 18</b> (with full refund for the Fall term) by contacting their faculty Student Affairs Office.

Sept. 18, Tues.      **REG**

NOTE

Nov. 1, Thurs.

APP

Application deadline for Winter admission to undergraduate programs. Verify which programs are open before applying. See [www.mcgill.ca/applying/january](http://www.mcgill.ca/applying/january)

---

Dec. 6, Thurs. to Dec. 21, Fri.	EXAM		Examination period for Fall term courses, and multi-term courses given by Agricultural and Environmental Sciences, Arts, Continuing Education, Education, Engineering including Architecture, Graduate Studies, Law, Management, Music, Nursing, Physical and Occupational Therapy (1 <sup>st</sup> and 2 <sup>nd</sup> year), Religious Studies, Science, and Social Work (B.S.W.).
Dec. 6, Thurs.	NOTE		Management students must apply for a deferred exam within 5 days of the date the exam was held. Other students, please see the deferred exam item (DEF) on January 15, 2008.
Dec. 7, Fri.	STAGE	BSW/ MSW	Last day of B.S.W. and M.S.W. Field Practice.
Dec. 7, Fri.	STAGE	EDUC	Last day of 3 <sup>rd</sup> and 4 <sup>th</sup> year field exp. in many B.Ed. programs

## CALENDAR OF DATES

---

Jan. 3, Thurs.      LEC      Winter term lectures begin in Agricultural and Environmental Sciences (including Farm Management and Technology program), Arts, all credit courses and non-credit language courses at Continuing Education, Education, Engineering including Architecture, Graduate Studies, Law, Management, Music, Nursing, Physical and Occupational Therapy (1<sup>st</sup> and 2<sup>nd</sup> year students), Religious Studies, Science, Dentistry (all programs) and Medicine students (1<sup>st</sup> and 2<sup>nd</sup> year students)

NOTE

NOTE      EDUC

Jan. 15, Tues.	APP	MED	Deadline for application to M.D.,C.M. 4-year program for Quebec applicants.
Jan. 15, Tues.	APP	LAW	Deadline for Law applications for Advanced Standing Applicants.
	NOTE		Deadline for University and Mature categories (non-CEGEP) applicants is November 1, 2007.
Jan. 15, Tues.	APP	PHD	Application deadline for Fall 2008 admission into the PhD program in Social Work.
Jan. 15, Tues. to Jan. 31, Thurs.	APP		Deadline for McGill students to obtain approval from their Faculty to participate in a student exchange in Fall 2008 and/or Winter 2009 term. Students must verify specific Faculty deadlines with t





DATE	ACTIVITY CODE	FACULTY/SCHOOL	ACTIVITY
TBA	ADV	NURS	Academic advising for U2 Bachelor of Science (Nursing) students entering U3. Academic advising for U1 BNUR-INT students entering U2.
Mar. 14, Fri.	EXAM	A&ES	Deadline to report all exam conflicts to the Student Affairs Office (Laird Hall, Room 106) for Winter term exams.
Mar. 15, Sat.	REG	NURS	Registration deadline for Summer NUR1 clinical courses to guarantee placement.
Mar. 20, Thurs.	NOTE	→	The normal Thursday schedule of course activities is cancelled for March 20. In its place, all lectures, labs, conferences and other course-related activities that are cancelled on Monday, March 24 because of Easter Monday will be held on Thursday, March 20
Mar. 21, Fri. to Mar. 24, Mon.	HOLIDAY	→	<b>EASTER.</b> No classes or exams. Administrative offices closed. Library hours to be announced.
Mar. 25, Tues. to Apr. 13, Sun.	INFO	→	Online course evaluation period for Winter term: Evaluations available for completion on Mercury through Minerva.
Mar. 28, Fri.	FORM	EDUC	Deadline to submit waiver forms for Teacher Certification for Spring and Fall graduates to the Student Affairs Office.
Mar. 28, Fri.	LEC	DENT	Last day of lectures for Winter term for 4 <sup>th</sup> year Dentistry students.
Mar. 31, Mon. to Apr. 18, Fri.	EXAM	DENT	Examination period for 4 <sup>th</sup> year Dentistry students.
<b>April 2008</b>			
Apr. 9, Wed.	INFO	→	Last day for the Winter 2008 term for students to request fee exemptions from and to submit legal documents for proof of Canadian citizenship and proof of Quebec residency to the Admissions, Recruitment and Registrar's Office. Students in Medicine or Continuing Education should submit their documents directly to their Faculty Student Affairs office or the Centre for Continuing Education. Documents received after this date will be updated for the following term only.
Apr. 11, Fri.	LEC	→	Last day of lectures for Winter term in Agricultural and Environmental Sciences, Arts, Continuing Education, Education, Engineering including Architecture, Graduate Studies, Law, Management, Music, Nursing, Physical and Occupational Therapy, Religious Studies, Social Work (BSW/MSW), and Science.
Apr. 11, Fri.	STAGE	BSW/MSW	Last day of Field Practice for B.S.W. (U2 & U3) students & for M.S.W students.
Apr. 14, Mon. to Apr. 30, Wed.	EXAM	→	Examination period for Winter term and multi-term courses given by Agricultural and Environmental Sciences, Arts, Continuing Education, Education, Engineering including Architecture, Graduate Studies, Law, Management, Music, Nursing, Physical and Occupational Therapy, Religious Studies, Science, and Social Work. <i>Exams begin earlier for Dentistry students. Contact Faculty for specific dates.</i>
Apr. 14, Mon.	STAGE	BSW	Field practice commences for students in the 2 year BSW program.
Apr. 18, Fri.	STAGE	D & HN	Last day for NUTR 409, Stage in Dietetics Level 3.
Apr. 18, Fri.	LEC	FMT	Last day of lectures in the Farm Management and Technology program.
Apr. 21, Mon. to Apr. 29, Tues.	EXAM	FMT	Winter term examination period for Farm Management and Technology program.
Apr. 21, Mon	STAGE	ED	1 <sup>st</sup> & 2 <sup>nd</sup> Field Experiences begin for most B.Ed.programs. Refer to <a href="http://www.mcgill.ca/ost">www.mcgill.ca/ost</a> for details.
<b>May 2008</b>			
May 1, Thurs.	IFT	ARCH	Application deadline for the School of Architecture for Fall term 2008 inter-faculty transfers.
May 1, Thurs.	APP	→	Deadline for applications for admission to Architecture, Arts, Education, Engineering, Management, Science, Nursing, Occupational Therapy or Physical Therapy from Canadian citizens or permanent residents studying or who last studied in a Canadian university.
May 1, Thurs.	APP	→	Deadline for Mature student application for admission to Architecture, Arts, Education, Engineering, Management, Science, Nursing, Occupational Therapy or Physical Therapy (Canadian citizens and permanent residents only)
May 1, Thurs.	APP	→	Deadline for special and visiting student application for admission to Architecture, Arts, Education, Engineering, Management, Science, Nursing, Occupational Therapy or Physical Therapy from applicants (Canadians who last studied at college or university outside Canada and non-Canadians who last studied at college or university inside or outside Canada).
May 1, Thurs.	APP	→	Deadline for application for admission to evening Part-time B. Com. Program.
May 1, Thurs.	APP	LAW	Deadline for Law Transfer and Quebec Bar applicants.
May 1, Thurs.	APP	REL	Application deadline for Fall admission of International students to Faculty of Religious Studies, BTh Program.
May 1, Thurs.	EXCH	→	Deadline for incoming undergraduate exchange applications from bilateral partners with a Fall term (September) start. Please note that the Schulich School of Music has an earlier deadline.



DATE	ACTIVITY CODE	FACULTY/SCHOOL	ACTIVITY
June 24, Tues.	HOLIDAY		<b>LA FÊTE NATIONALE DU QUÉBEC.</b> Libraries closed.
June 26, Thurs.	ADV	NURS	Academic advising for new BNUR-INT students. 9-12:00 or 1-4:00
June 30, Mon.	STAGE	D & HN	Placements begin for NUTR 209, Professional Practice Stage 1B (Dietetics).
<b>July 2008</b>			
July 1, Tues.	HOLIDAY		<b>CANADA DAY.</b> Libraries closed.
July 1, Tues.	APP		Deadline for special and visiting student application for admission to Architecture, Arts, Education, Engineering, Management, Science, Nursing, Occupational Therapy or Physical Therapy from applicants (Canadians) who last studied at college or university inside Canada).
July 2, Wed.	LEC/EXAM	DENT	Last day of lectures (including examinations) for 2 <sup>nd</sup> year Dentistry students.
July 10, Thurs.	REG	MUS	Deadline for returning students to submit practical lesson assignment card without a late fee.
July 15, Tues.	SUPP		Application deadline for supplemental examinations for courses ending in Winter term 2008 (including multi-term courses ending in Winter term) for Arts, Education, Nursing (including courses ending in the Summer Term), Religious Studies, Science, and Social Work (supplemental exams not available for Agricultural and Environmental Sciences, Engineering (UO courses only) or Management courses).
July 21, Mon.	LEC	MED	Lectures begin for 3 <sup>rd</sup> year Medicine students (PHP-D).
<b>August 2008</b>			
Aug. 4, Mon.	INFO		Last day for students to request fee exemptions from and to submit legal documents for proof of Canadian citizenship and proof of Quebec residency to the Admissions, Recruitment and Registrar's Office for the Summer 2008 term. Students in Medicine or Continuing Education should submit their documents directly to their Faculty Student Affairs office or the Centre for Continuing Education. Documents received after this date will be updated for the following term only.
Aug. 4, Mon. to Aug. 14, Thurs.	EXAMS	LAW	Deferred and supplemental examinations in Law.
Aug. 19, Tues. & Aug. 20, Wed.	EXAMS	A&ES	Deferred examinations in the Faculty of Agricultural and Environmental Sciences for Winter 2008 courses.
Aug. 20, Wed. & Aug. 21, Thurs.	EXAMS		Deferred and supplemental examinations for courses ending in Winter term 2008 (including multi-term courses ending in the Winter term) for Arts, Education, Nursing (including courses ending in the Summer term), Physical and Occupational Therapy, Religious Studies, Science, Social Work and Engineering (UO courses only).













### **3 General University Information and Regulations**

#### **Table of Contents**

- 3.1 General Policies and Information, page 34
  - 3.1.1 Admission
  - 3.1.2 Authorization, Acknowledgement and Consent
  - 3.1.3 Student Rights and Responsibilities
  - 3.1.4 Policy Concerning Access to Records
  - 3.1.5 Proof of Proficiency



More information about e-mail procedures is available at [www.mcgill.ca/email-policy](http://www.mcgill.ca/email-policy). E-mail support is provided by IST Customer Services (ICS), visit [www.mcgill.ca/ics/tools/email](http://www.mcgill.ca/ics/tools/email) for more information. Please see section 4.3 "Information Technology".

### 3.1.13 Health Insurance – Canadian Residents

Canadian students from outside the province of Quebec should check with their own provincial medicare office to ensure the validity of their health coverage while studying at McGill.

Canadian students who have been living abroad may not be eligible for provincial health insurance coverage. To ensure adequate health insurance coverage, you may enroll in the group plan offered through International Student Services.

All undergraduate students who pay tuition fees at either the Canadian or Quebec rates and who are members of the Students' Society of McGill University (SSMU) or the Macdonald Campus Students' Society (MCSS) are automatically covered by the Students' Society's Health and Dental Plans. For details on fees, Change-of-Coverage dates and on what is covered by the plans, please refer to the information contained on the Web at [www.aseq.com](http://www.aseq.com). If you're not sure of your eligibility, please contact ASEQ, at (514) 789-8775.

---

### 3.1.14 Special Medical Needs

Students who have particular medical needs are requested to have their physician submit appropriate information on a confidential basis to the Student Health Service; see section 4.1.2 "Student Services – Downtown Campus" for contact information on the downtown campus and see section 4.1.3 "Student Services – Macdonald Campus" for Macdonald campus contact information.

---

### 3.1.15 Minerva

Minerva is McGill's Web-based information system serving students, staff and faculty. Students view class schedules, including course descriptions and spaces available in course sections, register and make course changes using Minerva at [www.mcgill.ca/minerva](http://www.mcgill.ca/minerva). Some of the other options available to students on Minerva include viewing their unofficial transcript and de-



### 3.2.3.5 Where Do I Send my Documents?

Send in all your documents after you have been accepted to McGill and before you arrive on campus. **Do not send us originals.** Please fax or mail a clear and legible photocopy. Write your McGill ID on the documents so that we can match them to your record. The sooner you submit your documents, the sooner we can update your status and ensure that your record is in order.

#### By E-mail:

You may submit your legal documents electronically by following these steps:

1. **Save the attached file in an accepted format:**

- Standard PDF (.pdf)
- Tagged image format (.tif, .tiff; for scans)

(Due to the possibility of malicious content, Microsoft Word Documents (.doc), Hypertext files (.htm, .html) or any other format will not be accepted. Do save in an accepted format and do not just rename the file extension.)

2. **Ensure that the resolution used is no less than 300 dpi** for an electronic replica (scan) of documentation (e.g., scan of your birth certificate). Preferred file size is 100Kb per image.
3. **Address your email to [legaldocumentation@mcgill.ca](mailto:legaldocumentation@mcgill.ca) and attach your relevant scanned document(s).** Files should be sent as attachments to your E-mail and not as part of the E-mail body.
4. **Put your First Name, Last Name, and McGill ID number in the subject line of your E-mail.**

**Note:** Individual E-mail size (including your attachments) should not exceed 5 MB (5120 KB).

#### By Mail:

Admissions, Recruitment and Registrar's Office  
Documentation Centre  
688 Sherbrooke Street West, Suite 1460  
Montreal, QC H3A 3R1 CANADA

#### By Fax:

(514) 398-3227

#### In Person or by Courier:

Admissions, Recruitment and Registrar's Office Service Centre  
James Administration Building, Room 205  
845 Sherbrooke St. West  
Montreal, QC H3A 2T5 CANADA

If there is a problem with your documents, you may contact us at:

**Telephone:** (514) 398-4474

**E-mail:** [admissions@mcgill.ca](mailto:admissions@mcgill.ca)

---

### 3.2.4 Identification (ID) Cards

Students registered at McGill are required to present an ID card when writing examinations and when using libraries, Student Services, certain laboratories, and many residences.

An ID card cannot be issued until at least 3 hours after the student has registered. When requesting the card, new students must present Permanent Code information and proof of legal status in Canada (for a list of documents please see

---

### **3.2.5 Legal Name**

All students are registered under their legal name as shown in one of the following documents:

1. Canadian birth certificate.
2. Canadian Immigration Record of Landing (IMM1000 or





discontinuance of class attendance will suffice. The date on which a student drops or withdraws from all courses on Minerva or the date the request for withdrawal is submitted to the Student Affairs Office is the official date of withdrawal, even if the student stopped attending lectures earlier.

#### **3.3.7.1 Deadlines for University Withdrawal**

All students who have accessed Minerva to register must officially withdraw within deadlines if they decide not to attend the term(s) for which they have registered. See Withdrawal (W) deadline dates in the Calendar of Dates. Students who drop their last Fall or Winter course by the end of the add/drop period of that term are considered withdrawn from the University. They must follow the





available on the Downtown and Macdonald campuses to help students achieve greater academic, physical, and social well-being.

The fee, complemented by revenue from the Quebec government, the University, and the generosity of donors, supports Student Health (including Dental), Mental Health, Counselling and Tutorial, Chaplaincy, Career and Placement, Scholarships and Financial Aid, International Student Services, the Office for Students with Disabilities, the First Year Office (including the Francophone Assistant), Off-Campus Housing, and the First Peoples' House. The Office of the Dean of Students administers the academic integrity process as described in



registration will be cancelled for non-payment. The cancellation

**3.4.11 Yearly Fees and Charges by Faculty (2006-2007 rates)**

Tuition fees at the undergraduate level are based on the number of credits taken. The tables reflect normal full-time course loads.

*Part-time students will be charged tuition fees at the per credit rate and will be subject to student society fees, student services fees, registration and transcripts charges, and information technology charges.*

**Note:** Any changes to fees subsequent to the publication date will be updated as they are confirmed via the Student Accounts website







e.g., the replacement of one specified course with another or acceptance of a non-McGill course for credit.

Students using Degree Evaluation are reminded that it is an advising tool only. A Degree Evaluation Report that indicates program requirements have been satisfied does NOT constitute approval to graduate.

For details regarding Degree Evaluation including "reading a degree evaluation report," please consult the Registration, student records and exams Website at: [www.mcgill.ca/student-records/degree-evaluation](http://www.mcgill.ca/student-records/degree-evaluation).

---

### **3.5.6 Changes to Student Records after Normal Deadlines**

#### **3.5.6.1 Student Record Changes**

Student record changes include: course add or course drop, course withdrawal, university withdrawal, program change (including changing minors or concentrations).

#### **3.5.6.2 Registrar Deadlines**

Fall term - January 31

Winter term - June 1

Summer term - October 1

#### **3.5.6.3 Before Registrar Deadlines**

For record changes after the normal deadlines published in the



---

### **3.7 Scholarships and Financial Aid**

The Scholarships and Student Aid Office offers a complete range of merit and need-based awards for entering and in-course undergraduate students. As well, the office administers all federal, pro-



Students already proficient in French but who wish to keep up practice might consider courses in the Department of French Language and Literature, Faculty of Arts.

**Note:** Non-credit language courses, and in some cases credit language courses, completed at the Centre for Continuing Education may not be applied to program/degree requirements. Consult your Faculty for clarification.

\* McGill degrees and diplomas currently give access to corporations

---

### 3.9.2 Graduate Studies

Please note that students who intend to pursue graduate studies at McGill are not automatically admitted. Further information is available at [www.mcgill.ca/applying/graduate](http://www.mcgill.ca/applying/graduate), and in the Graduate and Postdoctoral Studies Calendar also available on the Web at [www.mcgill.ca/courses](http://www.mcgill.ca/courses).

Additional information regarding postgraduate awards is available at [www.mcgill.ca/gps](http://www.mcgill.ca/gps), or from the Graduate and Postdoctoral Studies Office, James Administration Building, Room 400, 845 Sherbrooke Street West, Montreal, QC H3A 2T5.

Inquiries about graduate assistantships should be directed to the individual departments.

## **4 Services and Support**

- 4.1 Student Services, page 55
  - 4.1.1 Office of the Dean of Students
  - 4.1.2 Student Services – Downtown Campus
  - 4.1.3 Student Services – Macdonald Campus

**Student Housing (Off-Campus):** maintains computerized lists of available off-campus student housing.  
Student Housing Office, 3641 University Street  
(514) 398-6010  
E-mail: [offcampus.housing@mcgill.ca](mailto:offcampus.housing@mcgill.ca)  
Website: [www.mcgill.ca/offcampus](http://www.mcgill.ca/offcampus)

**Residences:** offers accommodation for approximately 2,400 students.  
Student Housing Office  
(514) 398-6368  
E-mail: [housing.residences@mcgill.ca](mailto:housing.residences@mcgill.ca)  
Website: [www.mcgill.ca/residences](http://www.mcgill.ca/residences)

**Office for Students with Disabilities:** coordinates services to meet the special needs of students with disabilities.  
Brown Student Services Building, Suite 3100  
(514) 398-6009  
E-mail: [disabilities.students@mcgill.ca](mailto:disabilities.students@mcgill.ca)  
TDD: (514) 398-8198  
Website: [www.mcgill.ca/osd](http://www.mcgill.ca/osd)

**Tutorial Service:** sponsors an extensive tutorial program for students.  
Brown Student Services Building, Suite 4200  
(514) 398-6011  
E-mail: [tutoring.service@mcgill.ca](mailto:tutoring.service@mcgill.ca)  
Website: [www.mcgill.ca/tutoring](http://www.mcgill.ca/tutoring)

---

#### 4.1.3 Student Services – Macdonald Campus

While students who study on the Macdonald Campus may make full use of all Student Services available at McGill, the Office of the Dean of Students offers students direct access to the services listed below.

Further information can be found on the Web at [www.mcgill.ca/macdonald-studentservices](http://www.mcgill.ca/macdonald-studentservices) and the Student Services Website, [www.mcgill.ca/studentservices](http://www.mcgill.ca/studentservices).

Unless otherwise indicated, Macdonald Campus services are located in the Centennial Centre, Room CC1-124,  
21,111 Lakeshore Road.  
Telephone: (514) 398-7992  
Fax: (514) 398-7610  
E-mail



---

## 4.2 Athletics

### Downtown Campus

**Athletics:** offers programs in recreational, intercollegiate, instructional, intramural and sports clubs.

Athletics Complex, 475 Pine Avenue West (514) 398-7000

E-mail: [athletics@mcgill.ca](mailto:athletics@mcgill.ca)

Website: [www.athletics.mcgill.ca](http://www.athletics.mcgill.ca)

### Macdonald Campus

**Athletics:** Athletics offices are located in the Stewart Athletic Complex, just west of the Centennial Centre. Available at no charge to Macdonald students is a wide selection of activities, as well as the use of an excellent array of equipment. Facilities include a gymnasium, pool, weight room (with monitors on hand four evenings per week), arena, tennis courts, playing fields and large expanses of green space.

In addition to providing many open times for your enjoyment, there are also instructional, recreational, intramural and intercollegiate activities. There are nominal fees for instructional courses.

Stewart Athletic Complex (514) 398-7789

Website: [www.agrenv.mcgill.ca/society/athletic](http://www.agrenv.mcgill.ca/society/athletic)

---

## 4.3 Information Technology Resources

---

### 4.3.1 IST Customer Services (ICS)

McGill ICS is your first point of contact for problem resolution and help with IT services such as: E-mail, WebCT Vista, Virtual Private Network (VPN), Wireless Network, Dialup Access Service (DAS), and REZ Voice and Data Service (post-installation).

To get solutions to your IT issues and view the latest IT announcements, visit [www.mcgill.ca/it](http://www.mcgill.ca/it).

---

### 4.3.2 Network and Communications Services (NCS)

McGill NCS provides data services including access to Local Area Networks (LANs), the Internet, e-mail, McGill central systems, and the McGill University Website — all from virtually anywhere on campus (wired or wireless) and remotely. They also provide voice service (with long distance and voice mail) to students in McGill Residences. The Website at [www.mcgill.ca/ncs](http://www.mcgill.ca/ncs) lists products and services offered by McGill NCS.

---

### 4.3.3 Computer Labs

The computer labs are provided by many faculties and departments for students in their programs.

University's corporate memory and information assets through its Records Management Program. The Records Management Program regulates the flow of administrative records and protects vital



missions-The Montreal Children's Hospital, Medicine, Surgery, Neurosciences, Mental Health, and Women's Health.

The **Research Institute of the MUHC** is a world-renowned biomedical and health-care hospital research centre. The institute supports over 500 researchers, nearly 1,000 graduate and post-doctoral students and operates more than 300 laboratories devoted to a broad spectrum of fundamental and clinical research. The Research Institute operates at the forefront of knowledge, innovation and technology and is inextricably linked to the clinical programs of the MUHC, ensuring that patients benefit directly from the latest research-based knowledge.

A central future goal of the MUHC is to consolidate services on two campuses; this will involve modernization of the downtown Montreal General Hospital and the building of a new facility at the Glen Yard-a 43-acre site located in central Montreal. This two-campus redevelopment project will consolidate our patient care, research and teaching activities and support our continued excellence. **For more information about the MUHC, please visit our website at**

the-art metabolic kitchen to prepare foods in a controlled manner including sitting area for consumption of meals. The second floor houses an interview room to provide for attainment of written ethical consent/assent. A research/clinical assessment room is dedi-



---

#### 4.5.6 Libraries

All of the McGill University libraries are available to health sciences users but two of them are likely to be of particular interest. These are the Life Sciences Library and the Osler Library of the History of Medicine, both situated in the McIntyre Medical Sciences Building and the Macdonald Campus Library, which is a primary resource for Dietetics and Human Nutrition users.

##### **Life Sciences Library**

The Life Sciences Library was founded in 1823, making it the oldest health sciences library in Canada. The Library contains about 290,000 volumes and it receives about 1000 current print journal titles. In addition to print, the Library licenses access to a variety of electronic resources, including over 4,300 journals, 400 books and several clinical tools. Access to licensed electronic resources is available to all McGill faculty, staff and students.

The Library is a major resource for teaching, research and clinical care in communication sciences and disorders, dentistry, medicine, nursing, biology, and physical and occupational therapy. The Library is noted for its strong retrospective collection of books and journals. Information on the library collections and services can be found at [www.health.library.mcgill.ca](http://www.health.library.mcgill.ca).

The Library is open to all who need to use its collections. Borrowing privileges are extended to all McGill faculty, staff and students. The Library's hours vary throughout the year and are available on the website noted above or by telephoning (514) 398-4475. It should be noted that only holders of valid McGill ID cards can access the Library during weekend or evening hours.

##### **Osler Library of the History of Medicine**

The Osler Library of the History of Medicine, which opened in 1929, is physically and intellectually connected to the Life Sciences Library. The Library has as its nucleus the 8,000 volumes willed to McGill University in 1919 by Sir William Osler (one of its most famous pupils and teachers). The collection now totals over 55,000 volumes as Sir William's original gift has been augmented by transfers from the Life Sciences Library, by other gifts and bequests and by an active purchasing program. The Library is supported by a Friends group, publishes a Newsletter, available at the website noted above and offers an annual research travel grant.

The Osler Library is open to all who wish to consult its collections and current material is available for loan. Borrowing privileges are extended to all McGill faculty, staff and students. The Library is open only on weekdays from 9:00 to 5:00 and in July and August is also closed on Fridays.





## 5 Faculty of Dentistry

### Table of Contents

- 5.1 The Faculty, page 65
    - 5.1.1 Location
    - 5.1.2 Administrative Officers
    - 5.1.3 History
    - 5.1.4 Our Mission Statement
  - 5.2 Admissions - Undergraduate Program, page 66
    - 5.2.1 Four Year D.M.D. Program
      - 5.2.1.1 Dental Aptitude Test (DAT)
    - 5.2.2 Five-Year D.M.D. Program (Dent-P – Dental Preparatory)
    - 5.2.3 Advanced Standing: Foreign Trained Dentists and Transfer Applicants
    - 5.2.4 Compulsory Immunization Program
    - 5.2.5 Instruments
- 67age 66



Students must obtain a minimum cumulative GPA of 3.5 during their Dent-P year, with all individual marks "B" or higher, in order to be permitted into the regular program.

#### Requirements

Overall average, science course average, and individual course marks as well as the Cote de rendement au collégial (Cote R) are used in making the final decisions. A Cote R of 32.000 or higher would be considered competitive.

#### Required courses

Biology - 00UK, 00XU

Chemistry - 00UL, 00UM, 00XV

Mathematics - 00UN, 00UP

Physics - 00UR, 00US, 00UT

#### Recommended course

Chemistry 302 (or equivalent)

Those who do not take this course in CEGEP will be required to take an equivalent course in the Dent-P year.

#### Dental Aptitude Test (DAT)

The Dental Aptitude Test (DAT) is NOT required for entry into the Dent-P program.

#### Applicants not admissible to the Dent-P program:

- Applicants who are completing a Diploma of Collegial Studies in more than two years (with the exception of certain students taking a "double DEC" or those enrolled in an approved Sports Études program);
- CEGEP students who have formerly been enrolled in college or university programs or in post-secondary technical schools, within or outside of the province, are not eligible to apply;
- Applicants who have already obtained a Diploma of Collegial Studies who are registered in an undergraduate degree program or who have completed an undergraduate degree are not eligible.

These students must apply to the four-year program.

### 5.2.3 Advanced Standing: Foreign Trained Dentists and Transfer Applicants

#### Foreign Trained Dentists

Students who have received their dental degree from a non-Canadian university should contact the Association of Canadian Faculties of Dentistry, 100 Bronson Avenue, Suite 204, Ottawa, ON, K1R 6G8 or refer to their Website [www.acfd.ca](http://www.acfd.ca) for information concerning the Qualifying Programs or special programs which are offered at some Canadian dental schools. McGill University does not offer a qualifying program.

Applicants who have completed a dental or medical degree at a non-Canadian or non-American university may apply for advanced standing. They will be required to pass the first part of the American Dental Board Examination as well as the ACFD/AFDC Eligibility Examination prior to submitting an application and must also take an English Language Examination (TOEFL). Final decisions are partially based on these three exams.

#### Transfer Students

Students who are presently enrolled in a faculty of dentistry in Canada or the United States may be considered for entry into the third year of the D.M.D. program if:

1. they have completed or will have completed at least two years of the D.M.D./D.D.S. program;
2. they are ranked highly in their current program;
3. they have passed the first part of the American Dental Board Examination.

### 5.2.4 Compulsory Immunization Program

See [section 3.1.11 "Vaccination/Immunization Requirements"](#), is required for all applicants.

### 5.2.5 Instruments

All students must purchase a complete McGill Instrument Kit from the faculty, see [section 3.4.6 "Other Fees"](#).

### 5.2.6 Registration

#### 5.2.6.1 New Students

All students entering the four-year program in 2007-08 must initiate registration on Minerva ([www.mcgill.ca/minerva](http://www.mcgill.ca/minerva)). The Minerva Registration period for newly admitted Dentistry students is August 3 - August 15, 2007.

**All students are required to attend faculty registration in August. ATTEND(guq1 i 3i -1.1259Oh3.2(TENI6.2(8(S)g)8.)-7.4(2COMPI**



**DR. HOWARD S. KATZ SCHOLARSHIP IN DENTISTRY**, established in 2001 through gifts from family, friends and colleagues, to honour the memory of Howard S. Katz, B.Sc. 1967, M.Sc. 1970, Ph.D. 1973 and D.D.S. 1977, a distinguished graduate of the Faculty of Dentistry and Associate Dean (Academic) at the time of his death December 11, 1999. The Dr. Howard S. Katz Scholarship commemorates his many contributions to McGill and to the community and, in particular, his dedication to the well-being of students, patients and colleagues. This scholarship will be awarded by the Faculty of Dentistry to a student who has completed at least one year of the D.M.D. program, on the basis of academic achievement. Value: minimum \$2,100.

**DR. EARL LERNER FACULTY SCHOLARSHIP**, established in 2000 by a generous gift from Dr. Earl Lerner (D.D.S. 1963) for an undergraduate student currently enrolled in the D.M.D. program. This Scholarship will be awarded on the basis of high academic achievement, by the Faculty of Dentistry. Preference will be given to a student entering the second year of the D.M.D. program. Value: \$2,000.

**DR. WILLIAM BOROFF SCHOLARSHIP IN DENTISTRY**, established in 2004 through generous gifts from family and the McGill Dentistry Class of 1973 on their 30th Anniversary of graduation to honour the memory of their classmate, Dr. William Boroff. This Scholarship will be awarded by the Faculty of Dentistry Scholarships Committee to a meritorious undergraduate student in the D.M.D. Program who has demonstrated outstanding qualities of character, perseverance and sportsmanship. Preference will be given to a student who is entering the fourth year of the D.M.D. Program. Value: minimum: \$2,000.

**DR. HARRY ROSEN SCHOLARSHIP IN DENTISTRY**, established in 2004 by A. Bram Appel, B.Com. 1935, and Bluma Appel, in honour of Harry Rosen, D.D.S. 1953, a distinguished graduate and Professor Emeritus of the Faculty of Dentistry. Awarded by the Faculty of Dentistry Scholarships Committee on the basis of high academic standing to an undergraduate student who has completed at least one year of the D.M.D. program. Preference will be given to a student entering the fourth year of studies in the D.M.D. program. Value: \$2,000.

**RENA AND MERVYN GORNITSKY SCHOLARSHIP IN DENTISTRY**, established in 2005 by Rena Gornitsky, B.Com. 1953 and Mervyn Gornitsky, B.Sc. 1951, D.D.S. 1953. This Scholarship will be awarded by the Faculty of Dentistry Scholarships Committee to an undergraduate student in the D.M.D. Program who has demonstrated exceptional academic performance and initiative in the area of Oral and Maxillofacial Surgery. Preference will be given to a student who is entering the fourth year of the D.M.D. program. Value: minimum \$2,000.

---

### 5.4.3 Medals and Prizes

#### Fourth Year:

**C.D.A. PRESIDENT'S AWARD**, donated by the Canadian Dental Association, awarded to the graduating student who, over the undergraduate years, has shown outstanding qualities of leadership, scholarship, character, and humanity and who may be expected to have a distinguished career in the dental profession and society at large. The student must be a member of the Canadian Dental Association.

**DR. J.K. CARVER AWARD**,

(PreClinical Studies), in the second year of the dental undergraduate program. Value: minimum \$500.

**DR. I.K. LOWRY AWARD**, presented to the student attaining the highest overall standing in the Management of Oral Disease unit in the second year of the dental curriculum.

**DR. K.I. MELVILLE AWARD**, presented to the student attaining the highest overall standing in the Oral Health unit in the second year of the dental curriculum.

**DR. D.P. MOWRY AWARD**, presented to the student attaining the highest overall standing in the second year of the dental curriculum.

**First Year:**

**JAMES Q. BLISS ANNUAL BOOK AWARD**, awarded to the student who obtains the highest standing in the Gas, Fluids and Electrolytes unit. Value: \$100.

**JOSEPH MORL** n440036 Tc( M)Tj6.48 0 0 6.48 41.88 617.8309 6.43\*.Fz.093 Tc0 6.48 11AKJ8.1TT4 1 Tf0 - TD-0.000 0 m.7 0 TD-s 7.8309 6.43\*.Fz.093 Tc6.6.49Tm-02 7.m.7 0 TD-s 7.8LO 6

## 5.5 D.M.D. Curriculum

### 5.5.1 Curriculum Outline

\* The curriculum is under constant revision.

#### BASIS OF MEDICINE AND DENTISTRY

Sept.	Oct.	Nov.	Dec.	Jan.	Feb.	March	April	May	June	July	Aug.
Unit 1 Molecules, Cells & Tissues  (4 weeks)	Unit 2 Gas, Fluids & Electrolytes  (9 weeks)	Unit 3 Life Cycle  (3 weeks)	Unit 4 Endocrinology, Metabolism & Nutrition  (7 weeks)	Unit 5 Musculo- skeletal & Blood  (4 weeks)	Unit 6 Nervous System & Special Senses  (8 weeks)	Unit 7 Host Defense & Host Parasite (5 weeks)	Summer Vacation/ Research				
Physicianship 1 Dentistry Apprenticeship 1											

#### BOM AND DENTISTRY

#### PRECLINICAL STUDIES

Sept.	Oct.	Nov.	Dec.	Jan.	Feb.	March	April	May	June	July	Aug.	
Unit 7 Host Defense & Host Parasite (2 weeks)	Unit 8 Pathobiology, Treatment & Prevention of Disease  (14 weeks)			Unit 10 Oral Health							Summer Vacation/ Research	
				U11 Oral Dis.								
				Unit 12 Management of Oral Disease								
				Unit 13 Dental Public Health								
Physicianship 2 Dentistry Apprenticeship 2												





**5.5.2.3 Clinical Studies - Third Year**  
**DENT 305J1 DENTAL**

323J2 and DENT 323J3 are all successfully completed in consecutive terms) Diagnosis and management of the oral surgical problems encountered in general practice and exodontia clinical rotation.

7. A student with an cumulative GPA of less than 2.9 during the Preclinical program, Third year

McGill account. This will be reimbursed if there is a change upwards in the letter grade for the course.

The request for a formal reread must be made by the student, in writing, to the Faculty of Dentistry, Office of the Administrative Assistant (Student Affairs), and include reasons to justify the request. It must include a statement that the student has already met with the examiner to review the mark or indicating why this has not been possible. In the case of requests for rereads of group work, all members of the group must sign the request, indicating that they agree to the reread. Rereads for computer-scored examinations are not possible, but students may ask for a verification. There are no re-evaluations of oral examinations and laboratory examinations.

A list of possible re-readers will be obtained by the Office of the Administrative Assistant (Student Affairs) by contacting the Director of the Division involved in the reread. The Associate Dean (Academic Affairs) selects the second reader. The Office of the Administrative Assistant (Student Affairs) conducts all communication with second reader. The second reader is given the original documents, with marginalia, summary comments, and mark intact, as well as pertinent notes from the first examiner describing issues such as the general nature of the course or the assignment and grading schemes. The student's and the instructor's name are blanked out to reduce the possibility of prejudice, and is.8(ns.)]TTD-0.00ele.4(are no548 )-7.4(of0004 Tc-re )]Rightsiven t15.16of

Gerald M. Konanec; D.D.S.(McG.)  
Sidney Konigsberg; B.Sc., D.D.S.(McG.), M.S., Cert.Ortho.(Tufts),  
Dipl. A.B.O., F.R.C.D.(C)  
Oleg S. Kopytov; B.Sc., D.D.S., M.S., Cert.Ortho., F.R.D.C.  
Paul H. Korne; D.D.S.(McG.), M.Cl.D.(W. Ont.)  
Hervé Le Moual; D.E.A., M.Sc.(Paris), Ph.D.(Montr.)  
Eric Lessard; D.M.D., Cert. Oral Med. (Laval)  
Yu Kwong Li; D.D.S.(McG.)  
Irwin Margolese; B.Sc., D.D.S.(McG.), F.I.D.S.A., F.A.D.I.  
Norman M. Miller; B.Sc., D.D.S.(McG.)  
Robert Miller; B.Sc.(C'odia), D.D.S.(McG.)  
Julia R. Pompura; D.D.S.(McG.), Dip. Oral & Maxillofacial  
Surg.(Tor.)  
Charles Rawas; B.Sc., D.D.S.

Nafiseh Shahidi;

**Faculty of Dentistry**

Audrey Sherman; D.M.D.(Montr.)

Madelaine Shildkraut; B.Sc.(C'dia), D.D.S.(McG.), M.Cl.D.(W.  
Ont.)

Michael Silver; B.Sc., D.D.S.(McG.), M.S.D.(Marquette)

Milena Simicic; D.M.D.(Montr.)

Wagdi Sioufi; B.Sc., D.D.S.(McG.)

Olga M. Skica; B.Sc., D.D.S.(McG.), Cert.Perio.(Wash.)

David H. Sklar; B.Sc., D.D.S.(McG.)

Gerald Sohmer; B.Sc., D.D.S.(McG.), M.Sc., Cert. Endo.(Boston)

Keith Sotero; D.M.D.(McG.)

Paul Stamboulis; D.M.D.(Montr.)

William Steinman

Catherine Stewart

Sandra Suissa; D.M.D.(Montr.)

Alexandre Tache; D.M.D.(Montr.), M.Sc.(Tor.)

Jacob Tink; B.Sc.(McG.), D.M.D.(Montr.)

Barouyr Toukmanian;

Trung-Hieu Tran; D.D.S.(McG.)

Yazdi S. Turner; B.D.S.(Bombay), D.D.S.(McG.)

Evangelia Valavanis; D.D.S.(McG.)

Matthew Vamvakis; D.D.S. (McG.)

Paul Van Wijlen; D.D.S.(McG.)

Melissa Villafranca

Nicolino Vincelli; B.Sc.(C'dia), D.D.S.(McG.)

Joanne Vraliotis; D.E.C.

Duy-Dat Vu; D.M.D.(Laval), M.Sc., Cert.Pedo (Montr.)

Peter Weinstein; B.Sc., D.D.S.

Norman Yoffe; B.Sc. D.D.S.(McG.)

*Associate Members*

Eduardo L. Franco; B.Sc.(Estadual de Campinas), M.P.H.,

Dr.P.H.(N. Carolina - Chapel Hill)

Erika G. Gisel; B.A.(Zurich), B.S.,M.S.,Ph.D.(Temple)

*Adjunct Professors*

## 6 Faculty of Medicine

### Table of Contents

6.1	The Faculty, page 79	6.5.7	Emergency Medicine
6.1.1	Location	6.5.8	Epidemiology, Biostatistics, and Occupational Health
6.1.2	Administrative Officers	6.5.9	Family Medicine
6.1.3	History	6.5.10	Geriatric Medicine
6.1.4	Mission Statement	6.5.11	Human Genetics
6.1.5	Medical Societies	6.5.12	Medical Physics Unit
6.2	Scholarships, Bursaries, Prizes, Medals and Loan Funds, page 81	6.5.13	Medicine
6.2.1	Scholarships and Bursaries	6.5.14	Microbiology and Immunology
6.2.2	Prizes	6.5.15	Neurology and Neurosurgery
6.2.3	Medals	6.5.16	Obstetrics and Gynecology
6.2.4	Graduate Awards	6.5.17	Oncology
6.2.5	Loan Funds	6.5.18	Ophthalmology
6.3	Programs of Study, Admission and Curriculum, page 88	6.5.19	Otolaryngology
6.3.1	Undergraduate Programs of Study	6.5.20	Pathology
6.3.1.1	M.D., C.M. Program	6.5.21	Pediatrics
6.3.1.2	M.D./Ph.D. Program	6.5.22	Pharmacology and Therapeutics
6.3.1.3	M.D./M.B.A. Program	6.5.23	Physiology
6.3.1.4	Med-P Program	6.5.24	Psychiatry
6.3.2	Requirements for Admission	6.5.25	Social Studies of Medicine
6.3.2.1	M.D.,C.M., M.D./Ph.D. and M.D./M.B.A. Programs	6.5.26	Surgery
6.3.2.2	Med-P Program	6.6	Staff by Department, page 105
6.3.2.3	Additional Requirements		
6.3.3	Procedures for Selection and Admission		
6.3.3.1	Applicant Categories		
6.3.3.2	Admissions Committee		
6.3.3.3	Evaluation		
6.3.3.4	Advanced Standing or Transfer of Credits		
6.3.3.5	Early Decision		
6.3.3.6	Deferrals and Leaves of Absence		
6.3.3.7	Notification of Decision		
6.3.3.8	Acceptance of Offers		
6.3.3.9	Practice of Medicine		
6.3.4	Procedures for Submission of Application		
6.3.4.1	Application Deadlines		
6.3.4.2	Supporting Documents		
6.3.4.3	Additional Information		
6.3.4.4	Admissions Office		
6.3.5	Registration		
6.3.6	Collège des Médecins du Québec		
6.3.7	Curriculum Outline		
6.3.8	Courses for the Degree of M.D.,C.M.		
6.3.9	Standards of Behaviour		
6.3.10	Leaves of Absence		
6.3.11	Curriculum Review		
6.3.12	Evaluation System		
6.3.13	Medical Equipment		
6.3.14	Requirements for the Degree of M.D.,C.M.		
6.3.15	Requirements for Licence		
6.3.16	Graduate Training Programs in the Clinical Departments of the Faculty of Medicine		
6.3.17	Graduate Studies and Research in the Medical Sciences		
6.4	Curriculum Components and Units, page 99		
6.4.1	Basis of Medicine (BOM)		
6.4.2	Introduction to Clinical Medicine (ICM)		
6.4.3	Core Clerkship		
6.4.4	Senior Clerkships		
6.4.5	Electives		
6.5	Departments and Units in the Faculty of Medicine, page 100		
6.5.1	Anatomy and Cell Biology		
6.5.2	Anesthesia		
6.5.3	Biochemistry		
6.5.4	Biomedical Engineering		
6.5.5	Dermatology		
6.5.6	Diagnostic Radiology		

---

### 6.1 The Faculty

#### 6.1.1 Location

##### Faculty of Medicine

Administrative Offices  
3605 de la Montagne Street  
Montreal, QC H3G 2M1  
Canada

##### Educational Services

McIntyre Medical Sciences Building  
3655 Promenade Sir William Osler, Suite 601  
Montreal, QC, H3G 1Y6  
Canada

##### General Information

Administrative Offices: (514) 398-3515  
Educational Services: (514) 398-1768  
Admissions Information: (514) 398-3517  
Website: [www.medicine.mcgill.ca](http://www.medicine.mcgill.ca)

---

#### 6.1.2 Administrative Officers

Richard I. Levin; B.Sc.(Yale),M.D.(NYU), Postdoctoral Fellowship (C'nell) **Vice-Principal (Health Affairs) and Dean of the Faculty of Medicine**

April Caluori **Director, Administration and Operations**

France Drolet **Director, Admissions**

Michael D. Rosengarten; B.Eng., M.C., F.R.C.P. **Associate Dean (Continuing Medical Education)**

Yvonne Steinert; B.A.(McG.), M.A.(Tor.), Ph.D.(McG.) **Director, Centre for Medical Education, Associate Dean (Faculty Development)**

Janet Henderson; B.Sc., Ph.D.(McG.) **Associate Dean (Graduate Studies and Research)**

Sam Benaroya; B.Sc., M.D.,C.M.(McG.), F.R.C.P.(C) **Associate Dean (Interhospital Affairs)**

Joyce Pickering; M.D., C.M.(McG), M.Sc., F.R.C.P.(C), F.A.C.P. **Associate Dean (Medical Education and Student Affairs)**

Jean-Pierre Farmer; M.D., C.M., F.R.C.S.(C) **Associate Dean (Postgraduate Medical Education and Professional Affairs)**

Jim Gourdon; DVM



4. s'occupe des activités sportives et sociales des étudiants en médecine et avec autres faculties;
5. publie un journal, *The Placebo*, pour tous les étudiants en médecine;
6. de façon générale, essaie de fournir les ressources et le personnel afin de rencontrer les besoins et les désirs des étudiants qui se font ressentir.

L'Association des étudiants en médecine a des membres sur plusieurs comités de la faculté y compris le "Curriculum Committee" et "Admissions Committee". Des renseignements sur nos activités peuvent facilement être obtenus au bureau de l'Association et nous souhaitons ardemment que tous les étudiants participent à nos activités.

**Osler Society**

The Osler Society was founded in 1921 to perpetuate the memory and teaching of Sir William Osler, the most illustrious graduate and professor of the Faculty of Medicine at McGill. Through the presentation of lectures and seminars by students and guest lecturers on topics in the medical humanities, the Society strives to uphold Osler's ideals of a liberal medical education.

Meetings are held throughout t





**KINCH MEMORIAL BURSARY** – established by Miss Dia Joyce in memory of Mr. and Mrs. C.H. Kinch to assist medical undergraduates.

**FREDERICK PENTON LOFTUS LANE BURSARY FUND** – established in 1979 by a bequest from Esther M.E. Lane. Awarded by the Scholarships and Student Aid Office to undergraduate medical students on the basis of academic standing and financial need.

**LEUKEMIA RESEARCH FUND BURSARY** – established in 1992 by the Leukemia Research Fund. Awarded annually by the Faculty Student Research Committee to a medical student who participates in a summer research project in leukemia-related research at McGill University. Value: \$3,500.

**DR. GABRIEL LEUNG MEMORIAL AWARD** – established in 1987 by Mrs. Jane Leung and friends, through the Education Foundation of the Federation of Chinese Canadian Professionals, in memory of Dr. Gabriel Leung, who graduated from McGill with his M.D.,C.M. in 1972. Awarded by the Faculty Scholarships Committee to a second year medical student for achieving academic excellence or to pursue an independent research project under the direction of the Faculty. Financial need can be part of the consideration.

**GUSTAV LEVINSCHI SCHOLARSHIP FUND** – endowed in 1986 for needy medical students requiring assistance in the pursuit of their studies.

**DR. DAVID T.W. LIN FOUNDATION SCHOLARSHIP** – established in 1993 in honour of Dr. David T.W. Lin, B.Sc. (1937), M.D.(1940), O.C., Surgeon Emeritus at the Royal Victoria Hospital, Honorary President of the Montreal Chinese Hospital and a leader in the Chinese community. Awarded by the Scholarships and Student Aid Office to a medical student on the basis of academic achievement and demonstrated need. Preference will be given to students of Chinese origin. Value: \$2,600.

**JUDITH ANNE WRIGHT LITVACK BURSARIES** – bequeathed in 1999 by Judith Litvack to support the research bursary program for students in the Faculty of Medicine. The research projects supported are to be in the disorder anxiety. One or more bursaries in each of the two research committee. Value: minimum \$2,000.

**DR. HAROLD N. LYNGE BURSARIES** – established in 2004 by Dr. Harold N. Lynge, M.D., C.M., 1949, for one or more undergraduate medical students in good academic standing in the Faculty of Medicine who demonstrate financial need. Awarded by the Scholar-

**ROSE SCHWARZ - HELEN MARCUS BURSARY** – established by the family and friends of the late Rose Schwarz and the late Helen Marcus. To assist a needy, deserving student engaged in summer work in cancer research. Awarded with the approval of the National Council of Jewish Women.

**DR. JACOB C. SCHWARTZMAN SCHOLARSHIP** – established in 1983 by Helaine Livingstone, B.A. 1960, in memory of her father, Dr. Jacob C. Schwartzman, M.D.,C.M. 1927. To be awarded to a student in the Faculty of Medicine

**SHIRLEY RIVA FISHER PRIZE** – established in 1985 by Randy Fisher in memory of his mother, Shirley Fisher. Awarded to the medical student showing the most promise and sensitivity in the area of Palliative Care in Medicine. Value: \$100.

**ANNE MARIE FONG HUM MEMORIAL PRIZE (CHECK THE NURSING SECTION)** – awarded to the student who has demonstrated sensitivity and skill in helping patients and families cope with situations related to long-term illness. Estimated value: \$500.

**ROBERT FORSYTH PRIZE** – bequeathed by the late Miss Jeanie Forsyth, awarded annually to the graduating student who has shown particular ability in all branches of Surgery. Minimum Value: \$450.

**CHARLES E. FROSST MEDICAL PRIZE AND BRONZE MEDAL** – a bronze medal and prize are awarded annually to a student, in the Basis of Medicine, who has achieved excellence in the Unit on Pathobiology, Treatment and Prevention of Disease and has demonstrated, on the basis of interviews, the most promise in the field of Pharmacology. Value: \$1,000.

**CLAUDE GIROUD PRIZE IN PEDIATRICS** – established in 1981 in memory of Dr. Claude Giroud, Physician-Endocrinologist of the Montreal Children's Hospital and McGill University. Awarded on andTS7thet004 Tw[(Mont2Hce(2n.875pzp)7r]TJ.725s3p)7S250725s3p

comes to the student who obtains the highest standing in the Obstetrics and Gynecology clerkship. Value: \$400.

**PRIZE IN FORENSIC MEDICINE** – established in 1953, awarded to the second year medical student registered in course "Medical Ethics and Health Law" who writes the best essay, as assigned in the course syllabus, on the topic of medical ethics and health law. Minimum Value: \$1,500.

**PSYCHIATRY PRIZE** – awarded on the recommendation of the







*Ministère de l'Éducation, Loisir et Sport du Québec (MELS)* by  
time of graduation with the DCS:

- Biology: NYA (00UK), General Biology II (00XU);
- Chemistry: NYA (00UL), NYB (00UM), Organic Chemistry I (00XV);



studying at McGill is equivalent to studying medicine in a medical school in the United States. U.S. students studying at McGill write the United States Medical Licensing Exams (USMLE) in the same way and at the same time as U.S. students studying in U.S. medical schools. While U.S. medical students are eligible to do residency training in Québec, U.S. program directors recognize the high calibre of McGill graduates and those students are very competitive in their U.S. residency applications.

and a decision to award an early interview will be made within ten business days.

Successful candidates who receive an early offer to the Faculty of Medicine at McGill must withdraw their applications to, or acceptances from other medical schools in order to maintain their accepted status at McGill. Candidates who get early interviews but are not given an early offer maintain their candidacy in the regular admission cycle, keeping all evaluations and scores received during the early interviews. No additional interviews are granted.

Early decisions are not available to Med-P applicants.

### 6.3.3.6 Deferrals and Leaves of Absence

#### Deferred Admission

Admission into the first year of the M.D.,C.M. program may be deferred for a period of one year for the defined academic purpose of obtaining an advanced degree. However, students currently enrolled in graduate programs are expected to apply only when they are in the final year of that program. A written request which includes the details of the proposed academic program must be submitted no later than July 1 of the year in which deferral is sought. Deferred admission is not granted for the Med-P program.

#### Leave of Absence

Leaves of absence will be granted only for reasons of health or family crisis. Requests for leaves must be discussed with the Associate Dean and be accompanied by supporting documentation (e.g. a letter from the student's physician/counsellor). Permission for a leave of absence is required from the Dean of Medicine.

In general, a medical leave is granted for up to one year. The faculty reserves the right to impose a limitation on the number as well as the total duration of leaves. Should a prolongation be requested, the Faculty of Medicine reserves the right to require a second opinion from a faculty-designated physician. A student returning from a medical leave must provide supporting documentation from the treating physician/counsellor. This document must state that the student is capable of resuming his or her studies. Once the leave has been approved by the Dean, the student's registration and fees must be clarified with the Student Records Officer. Students may be required to forfeit all or part of their tuition fees. All students must have an interview with the Student Aid Office to reassess impact on financial aid.

The faculty will consider requests for other leaves under exceptional circumstances, as in the case of a student awarded a Rhodes Scholarship.

### 6.3.3.7 Notification of Decision

International applicants tend to receive their notice of final decision mid-February. Out-of-province Canadian applicants tend to receive their notice of final decision beginning March. Québec applicants (with the exception of Med-P applicants) tend to receive their notice of final decision mid April. Applicants to the Med-P program typically receive their notice of final decisions in mid May. Decisions are released via the Minerva system and confirmed by e-mail.

### 6.3.3.8 Acceptance of Offers

Acceptance is conditional upon receipt of a Bachelor's degree (M.D.,C.M., M.D./Ph.D., M.D./M.B.A. programs) or Diploma of Collegial Studies (Med-P program) and upon the successful completion by the time of registration of studies currently in progress, including the requirements for admission, at a level comparable to past academic performance.

Successful applicants must respond within two weeks to the offer of a place in the entering class.

For students accepted into the M.D.,C.M., M.D./Ph.D., or M.D./M.B.A. programs, notification of acceptance must be accompanied by a deposit of \$500, which will be applied against tuition. The deposit is refundable up to May 15 for international applicants, and up to June 15 for Out-of-Province Canadian applicants and Quebec residents.

For students accepted into the Med-P program, notification of acceptance of the offer must be accompanied by a deposit of

\$300, which will be applied against tuition. The deposit is refundable up to July 15.

### 6.3.3.9 Practice of Medicine

Being able to practice medicine in Québec requires a few steps. First and foremost, you are required to complete four years of

from the same pool of referees. Consult [www.medicine.mcgill.ca/admissions](http://www.medicine.mcgill.ca/admissions) for more details.

Applicants to the **Med-P program** are required (a) to submit their Quebec Ministry of Education Permanent Code (Perm Code) or official academic records, (b) a 1200-word autobiographical letter and (c) two-page curriculum vitae, (d) referee reports and letters of reference from three referees and (e) a copy of a valid Québec birth certificate or proof of Québec residency.

**Note:** this list is non-exhaustive and applicants are required to consult with the Admissions Office (see [www.medicine.mcgill.ca/admissions](http://www.medicine.mcgill.ca/admissions)) for complete details of the procedures.

The following additional supporting documents may be requested after the review of an application: (a) description or syllabi of prerequisite course(s); (b) statement of registration, or intention of registration, of current course(s); (c) photographic identification (when invited for an interview); (d) proof of graduation; (e) description or syllabus of program or graduation requirements; (f) supporting documentation for extenuating circumstances. Admission into the program is contingent on the timely receipt of all required documents. For more details, consult [www.medicine.mcgill.ca/admissions](http://www.medicine.mcgill.ca/admissions).

#### 6.3.4.3 Additional Information

**McGill ID Number** -- After the successful completion of an online (Minerva) application, the applicant will receive a notice through the mail that the application was received and will be assigned a McGill Identification Number. To expedite the admissions process, the admissions office requires the McGill ID number with the name in any communication, document transmission, or anything else pertaining to the application file.

**Disclosure** -- No information whatsoever will be given to anyone enquiring on behalf of an applicant without the applicant's written authorization.

**Name Discrepancies** -- The Admissions Office must be notified of any name discrepancies or variations among any of the official papers, most especially at the level of transcripts or MCAT results. Failure to do so may result in an incomplete admission file.

**Interviews** -- Interviews are conducted in the Faculty Offices in Montreal during the dates provided. Physical presence for the interview is compulsory; video conferencing or telephone interviews are not allowed. You will be contacted to arrange a time for the interviews. It is the applicant's responsibility to be available for interviews.

**Reapplication** -- The admissions office does not carry over admission dossiers for future sessions should the applicant not be admitted. Students who wish to reapply must submit a new application along with the required materials.

#### 6.3.4.4 Admissions Office

Faculty of Medicine Admission Office  
McGill University  
Suite 602, 3655 Promenade Sir-William-Osler  
Montréal, Québec, Canada  
H3G 1Y6  
Tel: +1 514-398-3517  
Fax: +1 514-398-4631  
Web: [www.medicine.mcgill.ca/admissions](http://www.medicine.mcgill.ca/admissions)  
E-mail: [admissions.med@mcgill.ca](mailto:admissions.med@mcgill.ca)

---

### 6.3.5 Registration

#### New Students

All students entering the four-year M.D.,C.M. program must initiate registration on the Web by adding the registration course REGN-RCMD on Minerva.

The Minerva Registration period for newly admitted Medicine students is August 3 - August 23, 2007. See [www.mcgill.ca/minerva-students](http://www.mcgill.ca/minerva-students) for registration dates.

In order for the official registration in the M.D.,C.M. program at McGill to be confirmed, the student must also present him or herself, with proper documentation, at the Faculty Registration and Orientation to be held from August 21 to 23, 2007 inclusive.

**ATTENDANCE IS MANDATORY.** Failure to attend will result in cancellation of the student's offer of admission to the program and registration.

For further information, consult the Web at [www.mcgill.ca/minerva](http://www.mcgill.ca/minerva) and the registration information being mailed to incoming students in June.

#### Returning Students

All returning students must register on the Web by adding the registration course REGN-RCMD on Minerva. Returning students must register by the deadline specified or pay the appropriate late registration fees.

For further information, consult the Web at [www.mcgill.ca/minerva](http://www.mcgill.ca/minerva) and the registration information E-mailed to returning students in early April.

---

### 6.3.6 Collège des Médecins du Québec

All students studying medicine in a university of the province of Quebec are required by law to register with the Collège des Médecins du Québec by October 15 of their first year of study. Registration packages are made available to accepted students. A student who fails to comply with this requirement or who has their registration withdrawn will not be permitted to continue in the program. ([www.cmq.org](http://www.cmq.org))









Students must complete Physicianship 5 and those seminar courses in which they have enrolled. The student must complete all units in Senior Clerkship successfully in order to graduate (see Student Handbook for details).

*The class of 2008 should refer to evaluation criteria for the various promotion periods in the Health Sciences Calendar 2006/2007.*

**Success on a final exit exam (one of either the Medical Council of Canada Qualifying Exam Part 1 (MCC), the United States Medical Licensing Exam 2 CK (USMLE), or an in house examination) is required for graduation beginning with the class of 2009.**

**Failure of Supplemental Examinations or Remedial Rotations**

A failure in a supplemental examination or remedial rotation in Promotion Periods I, II, III, IV, and V will result in the student being required to repeat the Promotion Period or to be dismissed from the program as determined by the CSPCO. A failure on a remedial in Promotion Period IV will result in dismissal from the program. A student may not repeat more than one Promotion Period in the curriculum. **Failure in any unit/course during a repeat Promotion Period will result in immediate dismissal from the program.**

The results of all supplemental examinations and the evaluation result of remedial clinical rotations will be recorded in the official transcripts as supplemental examinations, and will be considered

Certificates of Residency Training and certification by the Collège des Médecins du Québec, the College of Family Physicians of Canada, and the Royal College of Physicians and Surgeons of

**INDS 222 PHYSICIAN APPRENTICESHIP 2.** (1.5) (Restriction: M.D., C.M. and D.D.M. students only.) This course continues to build on Physician Apprenticeship 1, guiding and mentoring students as they continue their transition to physicianship.

**INDS 222J1/INDS 222J2/INDS 222J3 PHYSICIAN APPRENTICESHIP 2.** (0.5) (Restriction: M.D., C.M. and D.D.M. students only.) (Students must also register for INDS 222J2 and INDS 222J3.) (No credit will be given for this course unless INDS 222J1, INDS 222J2 and INDS 222J3 are all successfully completed in consecutive terms.) This course continues to build on Physician Apprenticeship 1, guiding and mentoring students as they continue their transition to physicianship.

#### **6.4.2 Introduction to Clinical Medicine (ICM)**

**INDS 301 INTRODUCTION TO CLINICAL SCIENCES.** (2) This course will teach all parts of history taking and physical examination in an objective and structured fashion. The course will be taught in small groups with one or two group leaders who will take the students through the principles of history taking and physical examination in a prearranged and structured mode. In the second and third week of the course, the students are asked to hone their skills by doing one written case report and physical examinations on patients from the ward. In the latter two weeks of the course, the students continue to refine their skills in groups, at the bedside, with their tutor.

**INDS 302 MEDICAL ETHICS AND HEALTH LAW - ICM.** (1) The objectives of this course are to familiarize students with the basic ethical and legal issues and problems arising in clinical medicine and to develop the skills needed to identify and resolve ethical dilemmas. Emphasis is placed on the following subjects: informed consent, risk disclosure, patient competence, confidentiality, research ethics, discontinuing life support, physician impairment, and ethics in the team context.

**INDS 305 INTRODUCTION TO CLERKSHIPS.**(1) The role of the clerk on the medical team, writing orders, ordering and interpreting laboratory tests and conduct with patients and other health professionals.

**INDS 306 INTRODUCTION TO EVIDENCE BASED MEDICINE.** (1)

**Note:** these three courses (above) are taught in a four-week unit called Professional Skills.

#### **Introduction to Surgery (SURG 301), Anesthesia (ANAE 301), and Ophthalmology (OPHTH 300)**

This 7-week unit will provide an introduction to surgery and related disciplines. The teaching occurs generally in small group settings or one-on-one with a clinical supervisor. It takes place in the in-patient hospital setting.

For course descriptions, refer to the appropriate unit in [section 6.5 "Departments and Units in the Faculty of Medicine"](#).

**INDS 322J1/J2/J3 PHYSICIAN APPRENTICESHIP 3.**(0.5) (Prerequisite: INDS 222.) (Restriction: M.D., C.M. students only.) (Students must also register for INDS 322J2 and INDS 322J3.) (No credit will be given for this course unless INDS 322J1, INDS 322J2 and INDS 322J3 are all successfully completed in consecutive terms.) This course continues to build on Physician Apprenticeship 1 and 2, guiding and mentoring students as they continue their transition to physicians.

#### **Introduction to Neurology (NEUR 301), Oncology (INDS 307), and Radiology (RADD 301), Dermatology (IMED 302) and Psychiatry (PSYT 302)**

This 7-week unit includes 2-week rotations in each of neurology and oncology as well as rotations in radiology and family medicine. The neurology experience is in hospital settings. The oncology experience is entirely based in ambulatory settings involving clinics in medical, surgical, pediatric and radiation oncology.

For course descriptions, refer to the appropriate unit in [section 6.5 "Departments and Units in the Faculty of Medicine"](#).

### **Other Courses**

The Department offers a range of courses leading to the Faculty Program/Major/Honours B.Sc. in Cell Biology and is well equipped for graduate research leading to the M.Sc. and Ph.D. degrees.

See the *Graduate and Postdoctoral Studies Calendar* and the Faculty of Science section of the *Undergraduate Programs Calendar*.

---

### **6.5.2 Anesthesia**

**ANAE 301 ANESTHESIA - ICM.** (1) A one-week core rotation is required of all students. Students are given supervised experience in the basics or A-B-Cs of resuscitation. They are expected to participate in preoperative, intraoperative and postoperative anesthesia care. Clinical applications of pharmacology and physiology are demonstrated.

#### **Electives**

Electives are offered to students during their Clerkship year. The objectives are to involve students in aspects of anesthesia care commonly encountered in the operating room, recovery ward and intensive care unit. These include fluid and transfusion therapy, management of acute pain relief, regional and general anesthesia techniques. The elective permits students to administer general anesthesia under strict supervision and to become involved in preoperative and postoperative patient care. Specialised electives in pediatric and obstetric anesthesia, clinical research and other subspecialties can be individually arranged.

---

### **6.5.3 4a1**



leading to the M.Sc., M.Sc.A. and Ph.D. degrees. See the *Graduate and Postdoctoral Studies Calendar* and the Faculty of Science section of the *Undergraduate Programs Calendar*.

---

### 6.5.15 Neurology and Neurosurgery

#### Core Courses

This Department contributes to the multidisciplinary curriculum components of Basis of Medicine and Introduction to Clinical Medicine.

**NEUR 301 NEUROLOGY - ICM.** (2) The course's objectives will be to have the student develop the skills to acquire and record a detailed neurological history; perform a complete, orderly and accurate neurological examination, develop a clinical problem-solving approach, i.e. to correlate neurological symptoms and deficits with neuroanatomy and disease processes. The student will also accumulate factual knowledge about neurological diseases, develop awareness of special procedures in neurology and foster positive attitudes towards independent learning.

#### Graduate Courses

See the *Graduate and Postdoctoral Studies Calendar*.

---

### 6.5.16 Obstetrics and Gynecology

#### Core Courses

This Department contributes to the multidisciplinary curriculum components of Basis of Medicine and Introduction to Clinical Medicine. In addition, see the Elective Program for elective opportunities.

**INDS 305 INTRODUCTION TO CLERKSHIPS.**(1) The role of the clerk on the medical team, writing orders, ordering and interpreting laboratory tests and conduct with patients and other health professionals.

#### PRACTICE OF MEDICINE (CLERKSHIP)

**OBGY 401 OBSTETRICS/GYNECOLOGY - CLERKSHIPS.** (8) As part of the core curriculum in Med III, students will spend an eight-week clerkship on a clinical teaching unit in one of the five centres within the McGill teaching hospital system. This clerkship is designed to enlarge and enrich the basic experience of Med I and Med II. Under supervision, students play an integral role in the management of patients and become a recognized part of the resident-intern-medical student team.

**OBGY 401D1 (4), OBGY 401D2 (4) OBSTETRICS/GYNECOLOGY - CLERKSHIPS.** (Students must register for both OBGY 401D1 and OBGY 401D2.) (No credit will be given for this course unless both OBGY 401D1 and OBGY 401D2 are successfully completed in consecutive terms) (OBGY 401D1 and OBGY 401D2 together are equivalent to OBGY 401) As part of the core curriculum in Med III, students will spend an eight-week clerkship on a clinical teaching unit in one of the five centres within the McGill teaching hospital system. This clerkship is designed to enlarge and enrich the basic experience of Med I and Med II. Under supervision, students play an integral role in the management of patients and become a recognized part of the resident-intern-medical student team.

---

### 6.5.17 Oncology

#### Core Courses

This Department contributes to the multidisciplinary curriculum components of Basis of Medicine and Introduction to Clinical Medicine. In addition, see the Elective Program for elective opportunities.

**INDS 307 PRINCIPLES OF ONCOLOGY.** (2) Students will be introduced to the basic principles of surgical, medical and radiation oncology. Objectives are to know cancer risks, clinical presenta-





---

### 6.5.25 Social Studies of Medicine

#### INDS 406 MEDICINE AND SOCIETY. (4)

##### Core Courses

This Department contributes to the following courses: Medicine & Society in the Senior Clerkship of the medical curriculum. (INDS 406)

##### Electives

The Department offers a wide range of electives in aspects of the social sciences and humanities as they relate to medicine. For details see the Electives Catalogue.

##### Graduate Program

Through the Department, graduate students can obtain an M.A. in the History of Medicine, an M.A. in Medical Anthropology and an M.A. in Medical Sociology. The above degrees are acquired in programs administered jointly with the Departments of History, Anthropology, and Sociology in the Faculty of Arts. Consult the Department for further information.

---

### 6.5.26 Surgery

#### Core Courses

This Department contributes to all curriculum components.

**SURG 301 SURGERY - ICM.** (4) The main objectives for this five-week rotation are to develop the history taking and physical examination skills necessary to collect information and mak1.4(m)r]TJ8ormati85 TD-0.0005 Tc0.00466]TJT\*197.54D





*Associate Members* — A. Ao, D. Cournoyer, J. Galipeau,  
J. Genest, B. Gilfix, P. Goodyer, B. Gottlieb, I. Gupta,

M.A. Gold, M. Goldberg, P. Goldberg, A. Gonda, S. Gottfried, R. Gougeon, D. Gratton, L. Green, W. Gregory, J. Gruber, J. Henderson, N. Hilzenrat, V. Hirsh, G. Honos, J. How, A. Huang, T. Huynh Thanh, B. Jean-Claude, A. Kahn, S. Kahn, M.A. Kapusta, A. Karaplis, M. Katz, P. Kavan, A. Kendall, J. Kimoff, D.G. Kinnear, L. Knight, L. Kovacs, R.H. Kreisman, R. Lalonde, P. Laneville, L. Larose, M. Laughrea, J.-J. Lebrun, L. Lecanu, E. Lee, M. Libman, R. Lin, M. Lipman, V. Loo, R. Mackler, E. MacNamara, I. Malcolm, D. Malo, R. Mangel, S. Marcovitz, A. Marelli, E. Matouk, N. Mayo, T.W. Meagher, S. Meltzer, R. Menzies, M. Miller, S. Mishkin, S. Morin, B. Moroz, D. Morris, J. Mort, S. Nattel, M. Newkirk, E. O' Brien, M. Olivier, G. Ostiguy, R. Palfree, K. Pantopoulos, B. Petrof, J. Pickering, L. Pilote, J. Portnoy, J. Prchal, M. Rabinovitch, J.T. Ratner, J.E. Rauch, P. Rene, S. Richard, S. Richardson, C.P. Rose, A. Rosenberg, M. Rosengarten, J.-P. Routy, D. Sasseville, J. Schulz, A. Schwab, M. Schweitzer, S.K.K. Seah, J.D. Shannon, D. Small, P. Small, M. Smilovitch, S. Solymoss, G. Spurl, R. St-Arnaud, D. Stubington, J. Sturgeon, P. Szego, H. Tannenbaum, P. Tonin, P. Tousignant, A. Towers, G. Tsoukas, M. Trifiro, B. Turcotte, B. Unikowsky, M. Vasilevsky, S. Vidal, A. Walling, B. Ward, M. Warner, N.B. Whittemore, G. Wild, N. Wolkove, X.J. Yang, H. Zackon, Y. Zang, A. Zidulka, J. Zidulka

F. Silviu-Dan, A.-A. Simard, M. Singer, R. Sladek, M. Starr, M.

*Assistant Professors* — S. Ades, J. Agulnik, A-e. Al Moustafa, T. Alcindor, R. Aloyz, P. Assimakopoulos, S. Assouline, Y. Bacher, V. Baffis, R. Bailey, A. Balbul, D. Banerjee, L. Bayne, J.P. Beaudry, Y. Beaudry, M. Behr, M. Beique, L. Beitel, A. Benedetti, R. Benoit, B. Bernardin, S. Bernatsky, G. Blake, V. Blank, M. Blostein, S. Blum, H. Blumer, G. Boileau, M. Bonnycastle, P. Bourgouin, A. Brassard, P. Brassard, A. Brown-Johnson, J. Buithieu, R. Bunea, J. Cameron, W. Carey, S. Cen, L. Chalifour, K. Champagne, H. Chang, M. Chasen, S. Chevalier, W. Chiu, S. Christopoulos, J. Chrome, B. Chrysler, P. Cleland, J. Cohen, R. Cohen, V. Cohen, D. Colantonio, J. Cox, J. Dagher, R. Dabrusin, D. Da Costa, J. Dagher, R. Dandurand, H. Daoud, K. Dasgupta, C. Davies, J.S. Delaney, A. Demirjian, N. Dendukuri, K. Dewar, S. Dial, P. Doran, K. Doyle, L. Dragatakis, S. Dube, G. Duque, R. Eappen, J. Eid, M. Elizov, C. Ells, E. Elstein, J. Elstein, J. Engert, V. Essebag, J. Falutz, S. Feldman, L. Filiatrault, E. Fixman, M. Fournier, J.N. Fox, R. Foxford, G. Friedman, R. Friedman, G. Frisch, M. Fujiwara, S.H. Fung, B. Gagnon, S. Gagnon, A. Galal, P. Galiatsatos, N. Garfield, P. Ghali, G. Ghattas, A. Giannakis, N. Giannetti, F. Gilbert, B. Gilfix, S. Gold, G. Goldman, S. Gosselin, C. Greenaway, M. Greenwood, A. Gursahaney, T. Hadjis, R. Haichin, C. Haston, P. Heilpern, I. Hings, A. Hirsch, R. Horn, D. Hornstein, M. Hudson, R. Husa, G. Inglis, S. Iqbal, D. Jayaraman, J. Jirsch, D. Joyal, T. Kader, D. Keith, M. Khanna, M. Klein, T. Kohn, G. Komaromi, M. Kornbluth, L. Koski, D. Kostiuik, J. Krasny, A. Kristof, C.F. Kudo, S.L. Kwee, A.-L. Lafontaine, M. Laliberte, J. Landry, Y. Lapierre, D. Laporta, S. Laporte, N. Larente, E. Laryea, H. Laryea, P.V. Latour, A.-M. Lauzon, C. Lauzon, K. Lawlor, P. Lebel, R. Leblanc, C. Legler, W. Leith, S. Lemay, G. Levesque, C. Liang, M. Lipnowski, J.-L. Liu, D. Lussier, L. Luterma, A.D. MacDonald, A.J. Maclean, T. Maniatis, S. Mannix, C. Maranda, M. Marcil, F. Marcotte, G. Martucci, S. Mayrand, T. McConnell, L. Meissner, P. Melanson, C. Michel, C. Mihalciou, C. Mindru, R. Molinari, Y. Monczak, J. Monette, J. Morais, L. Moreau, G. Morelli, S.T. Morin, A. Moulard, K.K. Murai, N. Nazerali, N. Ng Cheong, K. Nguyen, V. Nguyen, L. Ofiara, R. Olivenstein, L. Opatrny, N. Ozen, M. Palaic, M. Palayew, J. Parent, F. Patenaude, K. Pehr, J.P. Pelletier, P. Pelletier, C. Pepe, V. Petropoulos, C. Pineau, T. Podymow, H.Z. Pomerantz, D. Portnoy, R. Postuma, M. Prabhakar, P. Proulx, S. Qureshi, B. Rabinovitch, M. Radhakrishna, J. Raffoul, D. Rahal, E. Rahme, R. Rajan, Y. Rao, M. Reed, J.A. Rivera Ramirez, A. Rizzo, C. Rocheleau, R. Rubinstein, L. Rudski, A. Ryder, M. Saleh, F. Sandrin, J. St-Cyr, M. St-Jacques, R. Schlesinger, W. Schneider, K. Schwartzman, I. Sebag, S. Segall, C. Seguin, M. Semret, J. Setrakian, M. Sewitch, F. Shamikh, A. Shamy, D. Sheppard, R. Sheppard, M. Sherman, E. Sidorowicz, P. Siegel,

K. Pantopoulos, A. Pause, J.E. Rauch, P. Ribeiro, S. Richard, M. Saleh, C. Tsoukas, B. Turcotte, B.J. Ward  
*Adjunct Professors* — A. Descoteaux, E. Haddad, D.H. Jones, G. Kukolj, P. Lau, B. Lee, A. Makrigrannis, A.M. Matte, C. Rioux, R.P. Sekaly, V. Dave

**Neurology and Neurosurgery**

3801 University Street  
 Montreal, QC, H3A 2B4  
 Website: [www.neurology.mcgill.ca](http://www.neurology.mcgill.ca)

*Professor and Chair* — R.J. Riopelle

*Emeritus Professors* — D.W. Baxter, G. Bertrand

*Professors* — A. Aguayo, E. Andermann, F. Andermann, J. Antel, D. Arnold, M. Avoli, P. Barker, A. Beaudet, C. Bourque, G. Bray, S. Carbonetto, H. Chertkow, D. Colman, S. David, R. Del Maestro, M. Diksic, R.J. Dunn, H. Durham, A. Evans, J.P. Farmer, W. Feindel, S. Gauthier, J. Gotman, D. Guitton, E. Hamel, K. Hastings, P.C. Holland, B. Jones, M. Jones-Gotman, G. Karpati (*Killam Professor of Neurology and Neurosurgery*), D. Lawrence, A. Leblanc, R. Leblanc, B. Milner, G. Mohr, A. Olivier (*William Cone Professor of Neurosurgery*), H. Pappius, M. Petrides, B. Pike, M. Rasminsky, J. Richardson, H. Schipper, A. Sherwin, M. Shevell, E. Shoubridge, W. Sossin, J.G. Stratford, D. Tampieri, G. Tannenbaum, C. Thompson, G. Waters, R. Zatorre

*Associate Professors* — M. Aubé, S. Bekhor, J. Blundell, J. Carlton, C. Chalk, L. Collins, R. Coté, A. Dagher, F. Dubeau, T. Kennedy, I. Libman, P. McPherson, D. Melançon, C. Melmed, J. Minuk, J. Montes, K. Moore, J. Nalbantoglu, A. O'Gorman, O. Overbury, H. Paudel, A. Peterson, A. Ptito, D. Ragsdale, Y. Rao, B. Rosenblatt, A. Sadikot, G. Savard, R. Schirrmacher, R. Schondorf, P. Seguela, S. Stifani, J. Teitelbaum, A. Thiel, J. Woods

*Assistant Professors* — M. Angle, J. Atkinson, A. Bar-Or, G. Bedell, A. Bernasconi, J.F. Cloutier, M.E. Dilenge, E. Djordjevic, L. Durcan, L. Fellows, E. Fon, A. Fournier, S. Frey, D. Gendron, A. Genge, B. Goulet, M.C. Guiot, J. Hall, L. Jacques, J. Jirsch, D. Klein, T. Kolivakis, L. Koski, A.L. Lafontaine, Y. Lapierre, M. Lechter, T.G. Leonard, C. Limperopoulos, M. Maleki, J. Marcoux, E. Meyer, F. Moore, K. Murai, C. Pack, L. Pedraza, R. Postuma, C. Poulin, R. Roberts, J.-P. Roy, J. Rubin, E. Ruthazer, F. Salevsky, W. Shan, A. Shmuel, D. Sinclair, M. Sinnreich, D. Sirhan, L. Soualmi, J.-P. Soucy, T. Stroh, V. Sziklas, L. Taylor, D. Trojan, D. van Meyel, M. Veilleux, L. Vieira, C. Whatmough, F. Wien, T. Wein, C. Whatmough

*Lecturers* — S. Ahmed, S. Antel, D. Diorio, S. Narayanan, W. Vanast

*Associate Members* — J. Armony, C. Baker, S. Beaulieu, F. Bedford, C. Benkelfat, G. Bennett, V. Bohbot, D. Boivin, P. Boksa, D. Bowie, P. Braun, A. Brunet, C. Bushnell, N. Cermakian, F. Cervero, C. Chang, J. Chankowsky, D. Chartrand, T. Coderre, B. Collier, K. Cornish, C. Cuello, K. Cullen, B. Debruille, R. Del Carpio, C. deMontigny, R. Dykes, C. F. Parkman, J.P.A. Gratton, Y. Grodzinsky, D. Haegert, R. Hess, R. Joobar, F. Kingdom, L. Lach, P. Lachapelle, M. Lepage, M. Levin, M. Leyton, G. Luheshi, S. Lupien, A. Majnemer, M. Meaney, C. Mindru, K. Mullen, B. Petrof, J. Poirier, G. Pruesner, R. Quirion, J. Rochford, M. Simmonds, L. Srivastava, L. Stone, M. Sullivan, T. Taivassalo, G. Turecki, C.D. Walker, S. Williams, C. Wolfson, K. Worsley, S. Young

*Adjunct Professors* — Z. Argov, S. Berkovic, F. Cendes, N. De Stefano, L. Descarries, J. Doyon, P. Drapeau, G. Duncan, M. Edwards, E. Ehrensperger, R. Gilbert, A. Gjedde, J. Hardy, C. Holmes, J.P. Julien, S. Kalra, G. Leroux, P. Matthews, L. McKerracher, M. Molnar, M. Neveu, T. Owens, M. Pandolfo, T. Paus, Z. Pausova, T. Peters, L. Poissant, A. Prat, M. Ptito, D. Rabinovitch, E. Racine, Y. Robitaille, G. Rouleau, D. Saumier, A. Strafella

**Montreal Neurological Institute**

3801 University Street  
 Montreal, QC, H3A 2B4  
 Website: [www.mni.mcgill.ca](http://www.mni.mcgill.ca)

*Professor and Acting Director* — D. Colman  
*Neurologist-in-Chief* — L. Durcan  
*Neurosurgeon-in-Chief* — A. Olivier

**Montreal General Hospital**

1650 Cedar Avenue  
 Montreal, QC, H3G 1A4  
 Website: [www.muhc.ca/pfv/mgh](http://www.muhc.ca/pfv/mgh)

*Neurologist-in-Chief* — C. Chalk  
*Neurotrauma-in-Chief* —







Palmour, J. Paris, J.C. Perry, G. Pinard, J. Poirier, R. Quirion,  
J.J. Sigal, H. Steiger, A. Young, S. Young

*Associate Professors* — K. Arvanitakis, P. Assalian, C. Baron, S.

Beaulieu, P. Beck, M. Bond, S. Braverman, J. Caron, A.

Chaput, E.E. Corin, F. Cramer-Azima, I.S. Disher, S. Dongier-

Montagna, B.C. Boubouk, A. Buhay, W.D. Engels, R.B.

Feldman, C. Fichten, D. Frank, K.J. Gill, A. Granich, A. Gratton,

N. Grizenko, J. Guzder, S. King, T. Kolivakis, M. Lalinec-

Michaud, E. Latimer, M. Leyton, G. Morgenstern, J. Pecknold,

D. Pederson, M. Perreault, A. Propst, R.A. Ramsay, B.M.

Robertson, J. Rochford, Z. Rosberger, C. Rousseau, R.

Russell, M. Samy, L.K. Sr4.7.0002 02-4.frf6 gRamsay0.8(4, )JTJ-14.3704 -1.1259 TD-0.0006Cadotte[(RoTcWalk )-7.4(PerryWiviott-7.4(PeM)6.



## 7 School of Nursing

Margaret Purden; N., B.Sc.(N.), Ph.D.(McG.)  
**Academic Coordinator and Academic Advisor**  
**Ph.D. Program**

### Table of Contents

- 7.1 The School, page 115
  - 7.1.1 Location
  - 7.1.2 Administrative Officers
  - 7.1.3 Academic Staff
  - 7.1.4 History
  - 7.1.5 Programs Offered
  - 7.1.6 Language Policy
  - 7.1.7 Communication Policy
- 7.2 Bachelor Programs, page 117
  - 7.2.1 Bachelor of Science in Nursing Program – B.Sc.(N.)
    - 7.2.1.1 B.Sc.(N.) Entrance Requirements
    - 7.2.1.2 B.Sc.(N.) Course of Study
  - 7.2.2 Bachelor of Nursing (Integrated) Program – B.N. (I.)
    - 7.2.2.1 B.N. (I.) Entrance Requirements
    - 7.2.2.2 B.N. (I.) Course of Study
  - 7.2.3 Bachelor of Nursing Program (Non-Integrated) – (B.N.)
  - 7.2.4 Application for Admission
  - 7.2.5 Scholarships, Bursaries and Prizes
- 7.3 Registration and Regulations, page 120
  - 7.3.1 Registration with the Profession
  - 7.3.2 Academic Integrity
  - 7.3.3 Academic Standing and Evaluation System
  - 7.3.4 Requirements for Licensure
- 7.4 Undergraduate Courses, page 124
  - 7.4.1 Note to All Students

### 7.1.3 Academic Staff

#### *Emeritus Professor*

Elizabeth C. Logan; N., B.Sc.(Acad.), M.Sc.(Yale)

#### *Professors*

Nancy Frasure-Smith; B.A., Ph.D.(Johns H.) (*part-time*)  
 Laurie N. Gottlieb; N., B.N., M.Sc.(A.), Ph.D.(McG.) (*Shaw Professor of Nursing*)  
 C. Céleste Johnston; N., M.S.(Boston), B.N., D.Ed.(McG.) (*James McGill Professor*)

#### *Associate Professors*

Hélène Ezer; N., B.Sc.(N.), M.Sc.(A.)(McG.), Ph.D.(Montr.)  
 Franco Carnevale; N., B.Sc.(N.), M.Sc.(A.), M.Ed.,

## 7.1 The School

### 7.1.1 Location

School of Nursing  
 Wilson Hall  
 3506 University Street  
 Montreal, QC H3A 2A7  
 Canada  
 Telephone: (514) 398-4144  
 Fax: (514) 398-8455  
 Website: [www.nursing.mcgill.ca](http://www.nursing.mcgill.ca)

### 7.1.2 Administrative Officers

Richard I. Levin; B.Sc.(Yale), M.D.(NYU)  
**Vice-Principal (Health Affairs) and Dean of the Faculty of Medicine**

Hélène Ezer; N., B.Sc.(N.), M.Sc.(A.)(McG.), Ph.D.(Montr.)  
**Associate Dean, Faculty of Medicine**  
**Director, School of Nursing**

Marcia Beaulieu; N., B.Sc., M.Sc.(A), Ph.D.(McG.)  
**Assistant Director and Academic Advisor**  
**B.N. Program**

Madeleine Buck; N., B.Sc.(N.), M.Sc.(A)(McG.)  
**Assistant Director and Academic Advisor**  
**B.Sc.(N.) Program**

Franco Carnevale; N., B.Sc.(N.), M.Sc.(A.), M.Ed.,  
 Ph.D.(McG.)  
**Assistant Director and Academic Advisor**  
**Graduate Programs**

C. Céleste Johnston; N., B.N., M.S.(Boston), D.Ed.(McG.)  
**Associate Director, Research**



diplomas from hospital schools. Since 1957 the School has offered a first level undergraduate degree in nursing to university students interested in health care. The increasing complexity of nursing practice, coupled w n

- Chemistry SCH4U (or OAC);
- Physics SPH4U (or OAC);
- 4U(or OAC) English or French

**Applicants from Canadian Hi**

**The first year (U0) of the 139-credit four year program**

**LUELLA DOWNING PRIZE**





---

### **7.3.3 Academic Standing and Evaluation System**

Academic standing matters are th

**Satisfactory Standing:**

The student who has a Cumulative GPA of 2.0 and above, has received **no more** than **two** failures in the non-nursing courses of the program, has a Term GPA of 2.0 and above in each semester of the U2 and U3 B.Sc.N program, and failed no more than four credits in non-clinical nursing courses is considered in satisfactory standing. Freshman (U0) students who have a CGPA of 2.0 or above and have received no more than 2 failures in the U0 year are in satisfactory standing. Full-time students in satisfactory standing take between 12 and 18 credits per term.

**Probationary Standing:**

- Any student with a Cumulative GPA between 1.5 - 2.0 or who has not met the criteria of Satisfactory Standing and who has been allowed to continue the program or repeat a year of the program is on probationary standing.
- Any student who has exceeded the number of allowable supplemental examinations and has been given permission to stay in the program is on probationary standing.

A student in probationary standing must return to satisfactory standing at the end of the next academic year by completing the requirements set out by the Student Standing and Promotions Committee and obtaining a term GPA of 2.5 and a Cumulative GPA of 2.0 and above.

Students in probationary standing must carry a reduced load (maximum 14 credits per term) and follow the conditions set out in their letter. They must see their academic adviser to discuss course selection.

**Clinic Alert:**

Any student who obtains a grade of C in a clinical course or whose pattern of performance during the clinical evaluation period indicates steady decline or whose conduct in the areas of professionalism or moral/ethical behaviour is a concern can be placed on Clinic Alert. The student is allowed to continue into the subsequent clinical course but must meet the criteria outlined in the learning plan that is established between the student and clinical course coordinator. Failure to meet the learning plan criteria results in a grade of F.

**Unsatisfactory Standing:**

Any student who has a CGPA below 2.0, **or** a term GPA below 1.5 (or < 2.0 for U2 and 3 B.Sc.(N.) students), **or** a "D" or "F" in more than two non-nursing courses in the program **or** a "D" or "F" in more than four credits of nursing or has failed a clinical nursing course **or** who has failed a repeated professional course (NUR1) or required non-nursing course, is in unsatisfactory standing. Any U0 student who has obtained a "D" or an "F" in more than two courses or has a CGPA below 2.0 is in unsatisfactory standing.

\*Any student whose clinical performance is unsafe, and/or who has demonstrated unprofessional behaviour in class or clinical

three years full time in French at the secondary or post-secondary level are **not required** to write the French language examination. Information about the examination can be obtained at [www.oqlf.gouv.qc.ca](http://www.oqlf.gouv.qc.ca).





---

## **8 School of Physical and Occupational Therapy**

### **Table of Contents**

- 8.1 The School, page 127
  - 8.1.1 Location
  - 8.1.2 Administrative Officers
  - 8.1.3 Staff of the School
  - 8.1.4 History of the School
  - 8.1.5 List of Programs
- 8.2 Programs and Admission Information, page 128
  - 8.2.1 Professional Profiles
  - 8.2.2 Professional Undergraduate Programs Offered
  - 8.2.3 Requirements for Admission
    - 8.2.3.1 Admission Requirements for Undergraduate Programs
- 8.3 General Information, page 130
  - 8.3.1 Student Advising
  - 8.3.2 Language Policy
  - 8.3.3 Vaccination





---

### **8.2.2 Professional Undergraduate Programs Offered**

#### **Bachelor of Science (Occupational Therapy), B.Sc.(Occ.Ther.)**

Students admitted in September 2005 will continue in this program.

#### **Bachelor of Science (Physical Therapy), B.Sc.(Phys.Ther.)**

Students admitted in September 2005 will continue in this program.

#### **Bachelor of Science (Occupational Therapy) (non-practicing), B.Sc.(Occ. Ther.) (non-practicing)**

This is a 90 credit degree which provides access to the 58 credit Master of Science, Applied Degree in Occupational Therapy. This program provides the student with a basic health sciences foundation and undergraduate level courses specific to the practice of



**CLINICAL PRIZE OF EXCELLENCE**, awarded by l'Ordre des physiothérapeutes du Québec to the student demonstrating exceptional overall performance in attaining the objectives of the clinical placements throughout the B.Sc.(Phys.Ther.) program.

**HELEN M. GAULT AWARDS**, presented to a graduating student in Occupational Therapy and a graduating student in Physical Therapy who have demonstrated the most outstanding qualities of leadership, scholarship and professionalism throughout their undergraduate program.

**MCGILL ALUMNAE SOCIETY PRIZE**, presented upon graduation to a distinguished student for excellence and high academic standing. Preference given to women students. Value: \$150.

**PATRICIA ANN MACDONALD WELLS VAN DAELE MEMORIAL AWARD** established in 2003 by family, friends and colleagues of Patricia Ann MacDonald Wells Van Daele as well as graduates of the School of Physical and Occupational Therapy. Awarded by the School of Physical and Occupational Therapy to students enrolled in the School's professional programs or to post-baccalaureate physical and occupational therapists registered in the Master's programs in Rehabilitation Science, in recognition of an outstanding clinical, community-based, or research project related to the aging population and/or clinical education. Value: minimum \$500.

**SANDRA PERLMAN MEMORIAL PRIZE**, established in memory of Sandra Perlman, a graduate of the School of Physical and Occupational Therapy, P.T. class of 1958, and B.Sc.(Phys.Ther.) class of 1976 by her niece, Dr. Robyn Pugash. Awarded annually to the final year Physical Therapy student who, in the opinion of faculty, best exemplifies attributes desirable of a caring professional, these being compassion, empathy, concern for the needs of the patient and devotion to the profession. Value: \$150.

#### **Undergraduate Scholarships**

##### **CLIFFORD C.F. WONG SCHOLARSHIP**

Established in 1989 by the late Clifford C.F. Wong, B.Arch. (1960) to recognize distinguished academic standing. Awarded by the School of Physical and Occupational Therapy to a continuing student having completed at least one year in the Bachelor of Science



*Promotion and Course Guide.* These documents are updated annually and can be found on the web at [www.medicine.mcgill.ca/spot](http://www.medicine.mcgill.ca/spot). The policy applies only to student athletes, and not to student trainers.

In the event that a student is required to withdraw or abandons their studies in physical therapy or occupational therapy, the School of Physical and Occupational Therapy will proceed with the withdrawal procedure.

The School has the right to dismiss, at any time, any student who is considered incompetent and/or unsuitable for the practice of occupational therapy or physical therapy.

---

#### **8.4.4 Failure of Supplemental Examinations or Remedial Clinical Affiliations**

The results of all supplementals, remedial work or remedial clinical affiliations will be recorded on the official transcript of the student as supplemental examinations, and will be considered as such for purposes of promotion.

Students must complete all requirements of each promotion period before being permitted to enter the next promotion period.

A student with an overall GPA of less than 2.7 in the promotion period will be placed on probation, reviewed by the OTPRC/PTPRC and may be required to repeat the promotion period.

A student may not repeat more than two promotion periods in the curriculum. Failure in any course with the designation of OCC1, PHTH, or POTH, during a repeat promotion period will result in dismissal from the program.

**Students are not permitted more than one (1) failure in a clinical affiliation throughout the curriculum. A failure in a remedial clinical affiliation or in any subsequent clinical affiliation course will result in the student being required to withdraw from the program.**

Full details of the Rules and Regulations for Student Evaluation and Promotion can be found at the School's website at: [www.medicine.mcgill.ca/spot](http://www.medicine.mcgill.ca/spot) and in the School of Physical and Occupational Therapy course guides.

---

#### **8.4.5 Change of Course and Withdrawal Policy**

##### **Course Change and Withdrawal**

Course drop/add and Withdrawal (W) deadlines dates are listed in the *Calendar of Dates*. Following the Course Change deadline there is a period of a few days during which students may withdraw, with a grade of W and full refund of course fees, from courses that start in that term.

After the Withdrawal (with refund) deadline, there is a period during which withdrawal from a course will also result in a grade of W but no course fees will be refunded.

##### **Note:**

1. The Occupational Therapy and Physical Therapy programs are highly structured and students must receive the approval of the Program Director to determine what course changes, if any, are allowed. Students can consult the Student Affairs Office for

- d) The universities concerned are not responsible for special arrangements in cases of examination or class schedule conflicts:
- e) Marks earned at the host university will not appear on McGill transcripts or be included in McGill grade point averages;
- f) Students should be aware that late results received from host universities may delay their graduation.

Scholarship holders should consult with their the Scholarships Office concerning eligibility for continuation of renewal of their rewards.

Students must initiate an online Inter-University Transfer (IUT) application to request the required authorizations. The electronic form is available on the Web at [www.crepuq.qc.ca](http://www.crepuq.qc.ca). This form permits the students to obtain the required authorizations. The IUT application form can also be accessed via the McGill Web at [www.mcgill.ca/student-records/register/iut](http://www.mcgill.ca/student-records/register/iut).

**Note:** Once the IUT application is approved by both the home and host universities, the student remains responsible for registering in the same course for which they have obtained electronic approval. The method of registration of the host university will vary (e.g. Web, in-person, phone, etc.). **The student is advised to initiate the electronic application allowing for enough time to meet the host university's registration deadlines. Furthermore, the student is responsible for adhering to all registration deadlines of the host institution.**

**The letter grades applied by the host institution take precedence over the numerical grades if both are provided. In order to be granted transfer credits, the final grades earned at the host university must meet the minimum requirements as set by the Occupational Therapy or Physical Therapy programs.** Grades earned at the host university for transfer courses are not entered on the student's McGill transcript and are not included in the calculation of the TGPA or CGPA.

For universities outside of Quebec, it is the student's responsibility to ensure that an official transcript is sent from the host institution to the Student Affairs Office. Students studying at another Quebec university on an Inter-University Transfer Agreement (IUT) will have their grade(s) sent to McGill University automatically by the host university. Transcripts not received by the appropriate date will be considered fo

to other courses of less than a 13-week duration, and to courses in the Faculties of Law, Medicine, Dentistry, and Education that do not follow the normal University Timetable.

9. Individual faculties may propose variations in these regulations to the Academic Policy and Planning Committee in order to meet their special needs.

10. These regulations, and any variations to them, shall be made known to students by each faculty.

**Instructors are not permitted to grant any special treatment regarding examinations to any student.** Students who believe there are circumstances which might justify making special examination arrangements for them or which might legitimately be taken into account in evaluating their performance should apply to the Associate Dean of their faculty.

**It is the responsibility of the student to confirm the date, time and place of the examination by checking examination schedules posted on notice boards on campus and on the Web at [www.mcgill.ca/students](http://www.mcgill.ca/students).** This information is not available by telephone. No student will be allowed to enter an examination later than one half hour after it has started.

#### 8.4.8.4 Interim Class Tests and Mid-Term Examinations

McGill University, Health Sciences 2007-2008

- KF** – failed to meet the extended deadline for submission of work in a course; counts as a failure in the GPA and CGPA.
- KK** – completion requirement waived.
- L** – deferred examination.
- LE or L\*** – permitted to defer examination for more than the normal period.
- NR** – no grade reported by the instructor (recorded by the Registrar).
- P** – pass; not included in GPA.
- Q** – course continued in next term.
- S** – Satisfactory; equivalent to C or better in an elective course; not included in GPA. (Satisfactory / Unsatisfactory Option.)
- U** – Unsatisfactory; equivalent to D or F in an elective course; not included in GPA. (Satisfactory / Unsatisfactory Option)
- W** – withdrew; a course dropped, with permission, after the change of course period; not included in GPA.
- WF** – withdrew failing; a course dropped, with special permission in exceptional case, after faculty deadline for withdrawal from course, the student's performance in the course at that stage being on the level of an F; not included in GPA.
- WL** – faculty permission to withdraw from a deferred examination.
- NA or &&** – grade not yet available.
- W-- or --** – no grade: student withdrew from the University.
- Note re J grade:** –Students may appeal the assignment of the grade of J, but circumstances such as appearing at the incorrect time for an examination would not normally be sufficient reason for this grade to be replaced by a deferral.

#### 8.4.10 Satisfactory / Unsatisfactory Option

The University S/U grading option can be applied only to elective courses, not to required or complementary courses, or to professional courses with the designation of OCC1, PHTH, and POTH. It is, therefore, not normally available to students following the Physical Therapy and Occupational Therapy programs.

## 8.5 Occupational Therapy and Physical Therapy Programs

These programs are made up of 90 credits to be completed in three years followed by 1.5 graduate years over 5 semesters, which includes a clinical practicum of 1,000 hours. The course credit weight appears in parentheses after the number. The Occupational Therapy (non-practicing) and the Physical Therapy (non-practicing) programs are new this year. Students following the former Occupational Therapy and Physical Therapy programs should refer to the 2006-2007 calendar at [www.mcgill.ca/courses](http://www.mcgill.ca/courses) for detailed information.

### 8.5.1 Occupational Therapy (non-practicing) Program

#### U1 Required Courses

Fall Term

- ANAT 315 (4) Anatomy/Limbs and Back  
 OCC1 245 (3) Occupational Therapy Seminars  
 PHGY 209 (3) Mammalian Physiology 1

Winter Term

- ANAT 316 (2) Human Visceral Anatomy  
 EDKP 206 (3) Biomechanics of Human Movement  
 PHGY 210 (3) Mammalian Physiology 2  
 POTH 250 (2) Health Care and Professionalism  
 Complementary Courses (see below)

#### U2 Required Courses

Fall Term

- ANAT 321 (3) Circuitry of the Human Brain  
 POTH 455 (3) Neurophysiology

Winter Term

- PHTH 434 (3) Biomechanics  
 POTH 401 (3) Research Methods  
 Complementary Courses (see below)

#### U3 Required Courses

- OCC1 545 (8) Therapeutic Strategies in OT 1  
 OCC1 546 (3) Strategies in OT Client Management  
 OCC1 547 (6) Occupational Solutions 1  
 OCC1 548 (3) Holistic Approaches in OT  
 OCC1 549 (4) Therapeutic Strategies in OT 2  
 OCC1 550 (3) Enabling Human Occupation  
 OCC1 551 (3) Physical Therapy Neurological Rehabilitation

#### Complementary Courses (27 credits)

These courses are to be completed prior to third year (U3) and must include:

3 credits in Sociology

3 credits in Statistics at the 300 (intermediate) level

The remaining 21 credits must be completed from courses offered by the Faculty of Arts and Faculty of Science. Strongly recommended are courses in the following areas

3 credits in anthropology/sociology (with a focus on communication and culture)

3 credits in English (with a focus on professional writing)

3 credits in Economics (with a focus on Administration and Management)

These courses should be completed as follows:

6 credits in fall U1

3 credits in winter U1

9 credits in fall U2

9 credits in winter U2

### 8.5.2 Physical Therapy (non-practicing) Program

#### U1 Required Courses

Fall Term

- ANAT 315 (4) Anatomy/Limbs and Back  
 OCC1 245 (3) Occupational Therapy Seminars  
 PHGY 209 (3) Mammalian Physiology 1

Winter Term

- ANAT 316 (2) Human Visceral Anatomy  
 EDKP 206 (3) Biomechanics of Human Movement  
 PHGY 210 (3) Mammalian Physiology 2  
 POTH 250 (2) Health Care and Professionalism  
 Complementary Courses (see below)

#### U2 Required Courses

Fall Term

- ANAT 321 (3) Circuitry of the Human Brain  
 EDKP 395 (3) Exercise Physiology  
 POTH 455 (3) Neurophysiology

Winter Term

- EDKP 485 (3) Exercise Pathophysiology 1  
 PHTH 434 (3) Biomechanics  
 POTH 401 (3) Research Methods  
 Complementary Courses (see below)

#### U3 Required Courses

- PHTH 550 (8) Physical Therapy Orthopedic Management  
 PHTH 551 (4) Physical Therapy Neurological Rehabilitation  
 PHTH 552 (4) Cardiorespiratory Rehabilitation  
 PHTH 560 (8) Integrated Orthopedic Management  
 PHTH 561 (6) Integrated Neurological Rehabilitation  
 PHTH 570 (0) Professional Seminars

#### Complementary Courses (21 credits)

These courses are to be completed prior to third year (U3) from the following subject areas:

6 credits in Psychology/Behavioural Science

3 credits in Sociology

3 credits in Statistics at the 200 (introductory) level

3 credits in Statistics at the 300 (intermediate) level

6 credits in Arts/Humanities\*







**OCC1 548 HOLISTIC APPROACHES IN OT.**(3) (Prerequisites: U3/M1 Fall Term OT courses.) (Restriction: OT students only. Not open to students who have taken OCC1 436.) The theory, principles of treatment, clinical reasoning and therapeutic use of activities in the OT intervention of acute and chronic medical and surgical conditions.

**OCC1 549 THERAPEUTIC STRATEGIES IN OT 2.**(4) (Prerequisite: OCC1 545.) (Restrictions: U3/M1 students only. Not open to students who have taken the following courses: POTH 239, OCC1 236, OCC1 240, OCC1 339, ANAT 315 and OCC1 236.) Advanced Therapeutic Strategies for systemic and complex conditions.

**OCC1 550 ENABLING HUMAN OCCUPATION.**(3) (4 hrs/week) (4 hrs/week) (U3 and M1 OT students only) Occupational performance (productivity, self-care, leisure) is examined through the Canadian Occupational Performance Model and the Model of Human Occupation, both of which focus on the interaction of the individual with the environment. Human performance is analyzed focusing on prevention of disability and/or restoration of function.

**OCC1 551 PSYCHOSOCIAL PRACTICE IN OT.**(3) (Prerequisite: ANAT 321.) (Restriction: OT students only.) Principles of basic psychosocial assessments and treatment approaches for psychiatric conditions.

#### 8.6.4.3 Physical Therapy Courses

**PHTH 420 CLINICAL AFFILIATION 4.** (3) (5 weeks, full-time) Supervised clinical practice provided in the teaching hospitals of the Faculty of Medicine and other affiliated centres and in convalescent, chronic and home care facilities, specialized schools, clinics and community centres.

**PHTH 421 CLINICAL AFFILIATION 5.** (3) (5 weeks, full-time) Supervised clinical practice provided in the teaching hospitals of the Faculty of Medicine and other affiliated centres and in convalescent, chronic and home care facilities, specialized schools, clinics and community centres.

**PHTH 432 PAIN MANAGEMENT.** (3) (4.5 hours/week for 9 weeks) A case-based course to include the assessment and management of acute and chronic pain. Appropriate electrotherapeutic modalities will be included.

**PHTH 433 COORDINATED REHABILITATION 1.** (3) (4.5 hours/week for 9 weeks) A theme-based study

and other affilia

seminar/practical format as appropriate to a specialized rehabilitation topic. The student selects one theme from a list of current topic themes to be offered in that semester. The topic themes may change from year to year based on current and developing issues in rehabilitation.

## 9 School of Dietetics and Human Nutrition

### Table of Contents

- 9.1 The School, page 141
  - 9.1.1 Location
  - 9.1.2 Administrative Officers
- 9.1.3 Academic Staff
  - 9.1.4 General Information
- 9.2 Programs and Admission Information, page 142
  - 9.2.1 Degrees Offered
  - 9.2.2 Application
  - 9.2.3 Admission Requirements
- 9.3 Academic Information and Regulations, page 143
  - 9.3.1 Academic Credit Transfer
  - 9.3.2 Standing
  - 9.3.3 Degree Requirements
- 9.4 Academic Programs, page 144
  - 9.4.1 Freshman Major
  - 9.4.2 Major in Dietetics
  - 9.4.3 Major in Nutrition
  - 9.4.4 Minor in Human Nutrition
- 9.5 Courses, page 146
  - 9.5.1 Nutrition and Dietetics
  - 9.5.2 Courses Offered by Other Units

### 9.1 The School

#### 9.1.1 Location

School of Dietetics and Human Nutrition  
 Macdonald Stewart Building – Room MS2-039  
 Telephone: (514) 398-7840  
 Fax: (514) 398-7739  
 E-mail: [nutrition.dietetics@mcgill.ca](mailto:nutrition.dietetics@mcgill.ca)  
 Website: [www.mcgill.ca/dietetics](http://www.mcgill.ca/dietetics)  
 Administrative Officers

#### 9.1.2 Administrative Officers

Chandra Madramootoo; B.Sc.(Agr.Eng.), M.Sc.,  
 Ph.D.(McG.), P.Eng.(James McGill Professor) **Dean,**  
**Faculty of Agricultural and Environmental Sciences,**  
**and Associate Vice-Principal (Macdonald Campus)**

William H. Hendershot; B.Sc.(Tor.), M.Sc.(McG.),  
 Ph.D.(U.B.C.) **Associate Dean (Academic)**

Suha Jabaji; B.Sc.(AUB), M.Sc.(Guelph), Ph.D.(Wat.)  
**Associate Dean (Research)**

David J. Lewis; B.Sc., M.Sc., Ph.D.(Mem.)  
**Associate Dean (Student Affairs)**

Suzanne Higgins; B.A.(McG.) **Associate Director,**  
**Admissions and Student Affairs**

Gary O'Connell; B.Comm.(C'dia) **Director,**  
**Academic and Administrative Services**

William R. Ellyett; B.A.(Sir G. Wms.), B.Ed.(Phys.Ed.)(McG.)  
**Director of Athletics**

Philip Lavoie; Dip.Agr., B.Sc.(Agr.)(McG.) **Manager,**  
**Macdonald Campus Farm**

Ginette Legault **Manager, Campus Housing**

Peter D.L. Knox; B.Sc.(Agr.)(McG.) **Supervisor,**  
**Property Maintenance**

#### 9.1.3 Academic Staff

*Director* — Kristine G. Koski

*Professors* — Timothy A. Johns, Harriet V. Kuhnlein,  
 Luis B. Agellon (*Canada Research Chair*)

*Associate Professors* — Grace Egeland (*Canada Research Chair*), Katherine Gray-Donald, Kristine G. Koski, Stan Kubow, Louise Thibault, Hope Weiler (*Canada Research Chair*), Linda Wykes (*William Dawson Scholar*), Grace S. Marquis (*Canada Research Chair*)

*Lecturers* — Peter Bender (PT), Lynda Fraser (PT), Mary Hendrickson, Linda Jacobs Starkey, Maureen Rose, Joane Routhier, Sandy Phillips, Hugues Plourde, Heidi Ritter

*Adjunct Professors* — Mary l'Abbé, Laurie Chan, Kevin A. Cockell, Marcia Cooper, Edward Farnworth, Peter J.H. Jones

*Cross-Appointed Staff* —

Food Science and Agricultural Chemistry: Selim Kermasha  
 Medicine: Louis Beaumier, Franco Carli, Stéphanie Chevalier, Réjeanne Gougeon, L. John Hoffer, Ralph Lattermann, Errol Marliss, Thomas Schricker, Jean-François Yale

Parasitology: Marilyn E. Scott  
 MUHC: Sonya Page

Health and well-being of individuals in relation to food choices and physiological status prevails as the unifying theme of the programs in the School of Dietetics and Human Nutrition. The availability of food, normal metabolism and clinical nutrition, community nutrition at the local and international level, the evaluation of nutritional products and their use in nutrition, and the communication of information about food and health form the core of academic programs. tabolig5-4.o34n wa

---

## 9.2 Programs and Admission Information

---

### 9.2.1 Degrees Offered

#### **Bachelor of Science in Nutritional Sciences – B.Sc.(Nutr.Sc.)**

Two undergraduate degree programs are offered by the School. The Dietetics Major leads to professional qualification. The Nutrition Major offers four study options: Nutritional Biochemistry, Food Function and Safety, Global Nutrition, or Sports Nutrition.

#### **M.Sc.A.,**

**Applicants from Other Countries**

The normal basis for review of a file is completion of the credentials which lead to university admission in the applicant's country of study.

Students from the United Kingdom and Commonwealth countries may be admitted if they have completed Advanced Level examinations in chemistry, physics, and mathematics with two B's and one C or better in each, and five appropriate G.C.S.E. subjects at the Ordinary Level, including biology and English.

Advanced Level examination results which are appropriate to the intended program of studies will be assessed for advanced standing and credit when the results are received directly from the appropriate Examination Board. A maximum of 30 credits is granted for Advanced Level papers and a maximum of 10 credits for papers in Mathematics. Credit is normally granted only for grades of C or better.

Students who have a very good academic record in Lower Form VI and excellent results in at least five G.C.S.E. subjects at the Ordinary Level may be considered for admission to a program requiring the completion of a minimum of 120 credits.

For students applying on the basis of the French Baccalaureate, the minimum requirement is the Diploma in Series S in the "Première Groupe" with Mention "assez bien".

**Applicants with the International Baccalaureate**

Applicants should have completed Higher or Subsidiary Level mathematics and normally two of biology, chemistry, or physics. Ten advanced standing credits may be granted for mathematics and science Higher Level subjects completed within the IB Diploma, up to the maximum of 30 credits, while 6 credits will be given for non-science Higher Level examinations taken as part of the Diploma or for Higher Level Certificate subjects.

**Transfer Students**

Students wishing to transfer from other universities and colleges are considered for admission on the basis of both their university work and previous studies. A minimum of 60 credits of work must be completed at McGill if a degree is to be granted. Students must also fulfil the requirements of a degree program. Credits are determined only once a formal application and all the necessary supporting documents are received.

Basic science requirements are: two semesters of biology; two semesters of general chemistry, with labs; one semester of organic chemistry; two semesters of physics (including mechanics, electricity and magnetism, and waves and optics), with labs, and one semester in each of differential and integral calculus. A grade of B or better is expected in prerequisite mathematics and





\* Successful completion of all component parts of each level of

**Notes:**

1. Most courses listed at the 300 level and higher have prerequisites. Although instructors may waive prerequisite(s) in some cases, students are urged to prepare their program of study well before their final year.
2. Some courses may not be offered every year. For information on available courses, consult Class Schedule at [www.mcgill.ca/minerva](http://www.mcgill.ca/minerva); complete listings can be found in the Courses section of this Calendar.

---

## 9.5 Courses

**All pre- and co-requisites in a course sequence leading to a more advanced course must be successfully completed before registration will be permitted in the advanced course.**

**‡ Successful completion of all components parts of each level of Professional Practice (Stage) in Dietetics is a prerequisite for the next level. All required and complementary courses listed in semesters prior to or with a Stage are pre-requisites for that level.**

**Undergraduate registration is restricted to students in the Dietetics Major, CGPA greater than or equal to 2.50. Visiting students contact the Advising Coordinator regarding eligibility for specific courses.**

The course credit weight is given in parentheses after the title. Term(s) offered (Fall, Winter, Summer) may appear after the credit weight to indicate when a course would normally be taught. Please check the Class Schedule to confirm this information.

★ Denotes courses taught only in alternate years.

---

### 9.5.1 Nutrition and Dietetics

- **NUTR 200 CONTEMPORARY NUTRITION.** (3) (Summer) (Restriction: Not open for credit to students with a biology or chemistry course in their program, or to students registered in the School of Health Sciences, McGill University)

cardiovascular disease, obesity, diverticulosis, cancer, COPD, anorexia nervosa and bulimia.

**NUTR 345 FOOD SERVICE SYSTEMS MANAGEMENT.** (2) (Fall) (Pre-



cosmologies), ethics (moral values, frameworks, dilemmas), and law (formal and customary, rights and obligations) regarding political dimensions of critical environments, resource use, and technologies.

**FDSC 200 I**

209) Physiology of cardiovascular, respiratory, digestive, endocrine and renal systems.

**RELG 270 RELIGIOUS ETHICS AND THE ENVIRONMENT.** (3) (Fall: Macdonald Campus (Ste. Anne-de-Bellevue). Winter: Downtown Campus.) Survey of issues and debates in environmental ethics. The challenge posed to human and religious values by the present